

2023 YEAR IN REVIEW

PULSE

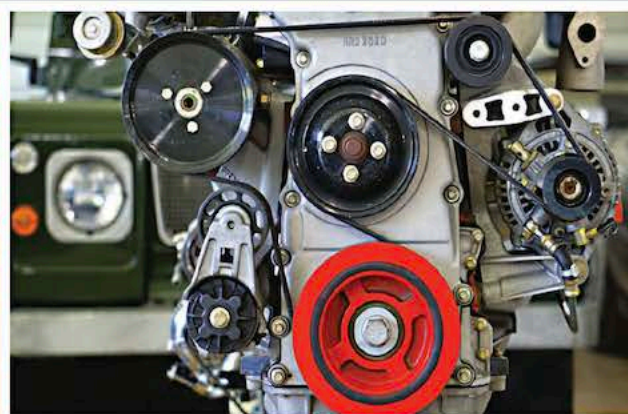
OF LONG ISLAND



IEEE

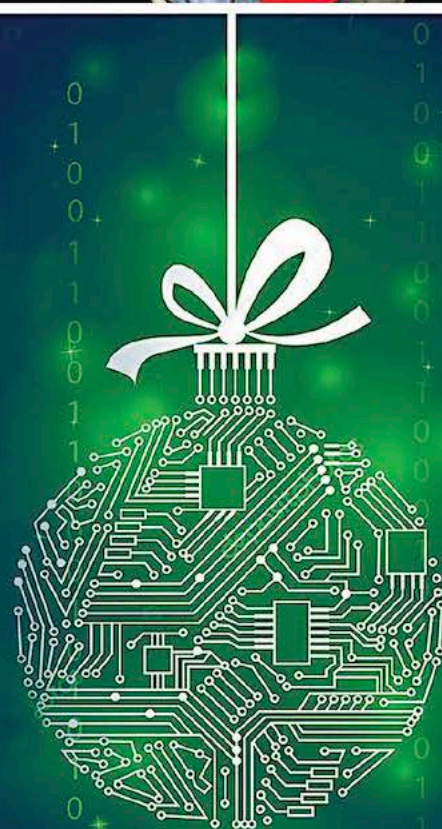


LONG ISLAND SECTION



INSIDE THIS ISSUE

- + Chair's Message | 2
- + 2024 Awards Banquet Save the Date | 5
- + 2023 Year in Review | 6 - 7
- + IEEE Membership Benefits | 9
- + Become a Senior Member | 10





Season's Greetings Everyone! I would like to thank the Section Officers, ExCom Leaders, Members and everyone who have contributed to the IEEE Long Island Section. Your ongoing support and dedication is valued and very much appreciated.

As your Chair, it has been a very enlightening year for me and I have really enjoyed the experience. Each of you have significantly contributed to successfully keeping our Section active and I remain humbled to be your Chair.

We have had many new volunteers step into ExCom leadership roles and continue to need energetic members with a positive and collaborative attitude to help us with Section activities.

Please save the date, our **Awards Banquet** is Thursday, March 21, 2024.

As we prepare for 2024; please take time to renew your membership at iee.org/renew.

Listed below is next year's ExCom meeting calendar:

2024 Executive Committee Meetings

- January 22
- March 11
- May 20
- September 16
- November 18
- December Gathering

If you have any suggestions, recommendations, questions, comments or concerns; please contact me at chair@ieee.li

Happy Holidays and enjoy the "2023 Year in Review"!

Rhonda Green

2023 IEEE Long Island Section Chair
chair@ieee.li

THE PULSE

OF LONG ISLAND


IEEE


LONG ISLAND SECTION

The Pulse of Long Island is produced by the Long Island Section of the **Institute of Electrical & Electronics Engineers**. It is published monthly except during July & August.

Andrew Ritter, *Editor*
pulse@ieee.li

Anthony Giresi, *Graphic Designer*
pulse@ieee.li

The opinions expressed in this newsletter are those of the authors, and no endorsement by IEEE, its officials, or its members is implied. IEEE prohibits discrimination, harassment, and bullying. For more information on IEEE policies, please visit www.ieee.org.

IEEE Long Island Section reserves the right to decide whether or not to publish any content in our sole discretion. Any contributed content may be edited before publishing.


IEEE

INSTITUTE OF ELECTRICAL & ELECTRONICS ENGINEERS

445 Hoes Lane, Piscataway, NJ 08855-1331

Phone (USA & Canada): 1-800-678-4333

Phone (Worldwide): 1-732-981-0060

Website: www.ieee.org

E-mail: contactcenter@ieee.org

IEEE LONG ISLAND SECTION OFFICERS

CHAIR
RHONDA GREEN
CHAIR@IEEE.LI

VICE CHAIR
JAMES MARTINO

TREASURER
SANTO MAZZOLA
TREASURER@IEEE.LI

SECRETARY
UDIT SHARMA
SECRETARY@IEEE.LI

JUNIOR PAST CHAIR
ARNOLD STILLMAN

SENIOR PAST CHAIR
LOU D'ONOFRIO

AFFINITY GROUPS and COMMITTEES

AWARDS COMMITTEE
JAMES MARTINO
AWARDS@IEEE.LI

EDUCATIONAL ACTIVITIES
MARJANEH ISSAPOUR
EDUCATION@IEEE.LI

EMPLOYMENT ASSISTANCE
CHARLES PLECKAITIS
EAC@IEEE.LI

ENTREPRENEUR NETWORK
BILL WILKES SR.
EN@IEEE.LI

LEGAL AFFAIRS
JOHN VODOPIA
LEGAL@IEEE.LI

LIFE MEMBERS
DON GRIECO
LIFE@IEEE.LI

MEMBERSHIP DEVELOPMENT
CARL MESHENBERG
MEMBERSHIP@IEEE.LI

PROFESSIONAL SOCIETY & INDUSTRY LIAISON
BILL WILKES SR.
LIAISON@IEEE.LI

STUDENT DEVELOPMENT ACTIVITIES
JAMES MARTINO
STUDENT@IEEE.LI

WOMEN IN ENGINEERING (WIE)
LONNI CHU
WIE@IEEE.LI

YOUNG PROFESSIONALS
RAJ YOGARATHNAM
YP@IEEE.LI

www.ieee.li

THE IEEE LONG ISLAND SECTION WEBSITE

The IEEE LI Section website is regularly updated to reflect recent section activity and upcoming events. Each Society and Affinity Group has a dedicated page that describes their function and includes contact information.

www.consult-li.com

CONSULTANT'S NETWORK OF LONG ISLAND

The Consultant's Network of Long Island maintains a referral service of engineering, computer, managerial and technical professionals.

membership@ieee.li

MEMBERSHIP DEVELOPMENT

For more information on membership with the LI Section of the IEEE, e-mail Carl Meshenberg at: membership@ieee.li

THE IEEE LI SECTION HAS 19 CHAPTERS. EACH CHAPTER IS A TECHNICAL SUBUNIT OF THE LI SECTION, ASSOCIATED WITH AN IEEE SOCIETY. THE CHAPTERS, AS WELL AS THE SECTION, ARE ALWAYS WELCOMING VOLUNTEERS. IF YOU WOULD LIKE TO HELP WITH ANY OF THE LI CHAPTER'S STEERING GROUPS, PLEASE DO CONTACT THE RELEVANT CHAPTER CHAIR, VICE CHAIR, OR ONE OF THE SECTION OFFICERS.



AEROSPACE & ELECTRONIC SYSTEMS SOCIETY (AES)

Chair: **Dave Mesecher**
Vice Chair: Vacant
Email: aes@ieee.li



ANTENNAS AND PROPAGATION SOCIETY (APS)

Chair: **Sai Padmanabhan**
Vice Chair: Vacant
Email: ap@ieee.li



CIRCUITS AND SYSTEMS SOCIETY (CAS)

Chair: **James Colotti**
Vice Chair: **Pawel Janczykowski**
Email: cas@ieee.li



COMMUNICATIONS SOCIETY (COMSOC)

Chair: **Howard Hausman**
Vice Chair: **Tony Bowden**
Email: communications@ieee.li



COMPUTER SOCIETY (CS)

Chair: **Udit Sharma**
Vice Chair: Vacant
Email: computer@ieee.li



ELECTROMAGNETIC COMPATIBILITY SOCIETY (EMCS)

Chair: **James Colotti**
Vice Chair: **Bob DeLisi**
Email: emc@ieee.li



ENGINEERING IN MEDICINE & BIOLOGY SOCIETY (EMBS)

Chair: **John Vodopia**
Vice Chair: **Milan Toma**
Email: emb@ieee.li



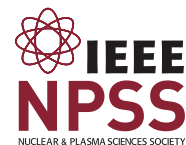
INSTRUMENTATION AND MEASUREMENT SOCIETY (IMS)

Chair: **Renauldy Louis**
Email: im@ieee.li



MICROWAVE THEORY AND TECHNIQUES SOCIETY (MTT)

Chair: **Sai Padmanabhan**
Vice Chair: **Srinivas Sridhar**
Email: mtt@ieee.li



NUCLEAR AND PLASMA SCIENCES SOCIETY (NPS)

Chair: **Gabriella Carini**
Vice Chair: Vacant
Email: nps@ieee.li



PHOTONICS SOCIETY (IPS)

Chair: Vacant
Email: photonics@ieee.li



POWER & ENERGY/INDUSTRY APPLICATIONS SOCIETY (PES & IAS)

Chair: **Nathaniel Steier**
Vice Chair: **Marjaneh Issapour**
Email: power@ieee.li



POWER ELECTRONICS SOCIETY (PELS)

Chair: **Ronald DeLuca**
Vice Chair: **Predrag Hadzibabic**
Email: pels@ieee.li



PRODUCT SAFETY ENGINEERING SOCIETY (PSES)

Chair: Vacant
Email: safety@ieee.li



ROBOTICS AND AUTOMATION SOCIETY (RAS)

Chair: **William Wilkes**
Vice Chair: **Andrew Sass**
Email: robotics@ieee.li



SIGNAL PROCESSING SOCIETY (SPS)

Chair: **Jessica Donaldson**
Vice Chair: **Dave Mesecher**
Email: signal@ieee.li



SOCIAL IMPLICATIONS OF TECHNOLOGY SOCIETY (SSIT)

Chair: **Howard Edelman**
Vice Chair: **John Vodopia**
Email: social@ieee.li



SYSTEMS COUNCIL (SYSC)

Chair: Vacant
Email: systems@ieee.li



TECHNOLOGY & ENGINEERING MANAGEMENT SOCIETY (TEMS)

Chair: Vacant
Email: tmc@ieee.li

MARK YOUR CALENDAR: **MARCH 21, 2024**



IEEE LONG ISLAND SECTION
AWARDS
BANQUET 2024

2023 YEAR IN REVIEW

APRIL 2023: RF/MICROWAVE SYMPOSIUM



MAY 2023: MICROMOUSE COMPETITION



MAY 2023: LISAT CONFERENCE



JUNE 2023: REGION 1 BOARD OF GOVERNORS



AUGUST 2023: IEEE 2023 SECTIONS CONGRESS



AUGUST 2023: SIGNAL PROCESSING SOCIETY CHAPTER CERTIFICATION



SEPTEMBER 2023: IEEE LI SECTION ANNUAL BBQ



OCTOBER 2023: WIE FORUM USA EAST



NOV. 2023: IEEE STONY BROOK CHAPTER ZEBRA TOUR



NOVEMBER 2023: IEEE LI SECTION 2023 POWER ELECTRONICS SYMPOSIUM



HAPPY NEW YEAR **2024**

LET YOUR VOICE BE HEARD

WRITE TO THE PULSE

The Pulse of Long Island is a newsletter for the members of the IEEE Long Island Section. You can let your voice heard by writing to the Editor. How to bring more value to our members? Interesting new technology, or a project? An issue of interest to members of the IEEE Long Island, Long Island engineers and computer professionals, or Long Island technical community at large? Write to the **Pulse**. Let your letter be read, and your voice heard.

HOW CAN I CONTRIBUTE TO THE PULSE?

Send your letters or articles via email to pulse@ieee.li. If selected for publication, the letter or article will be edited before being published.



ADVERTISERS:

Please contact us at pulse@ieee.li for advertising rates.



CONTRIBUTION DEADLINE:

20th of a month for the next month edition.

CONTRIBUTIONS FROM LONG ISLAND TECHNICAL & ENGINEERING COMPANIES:

Publish your technology-related press release (up to one page) at no cost. Please send the press release as a PDF file attached to email to pulse@ieee.li, addressed to the Editor, with a Subject line "Pulse -PR" followed by your company name, and the responsible contact person's name, email and phone number in the email body.



THE **PULSE**
OF LONG ISLAND

IEEE MEMBERSHIP and MEMBER BENEFITS

IEEE membership offers access to technical innovation, cutting-edge information, networking opportunities, and exclusive member benefits. Members support IEEE's mission to advance technology for humanity and the profession, while memberships build a platform to introduce careers in technology to students around the world.



JOIN IEEE OR RENEW YOUR MEMBERSHIP

Reach your full potential as part of the world's largest technology community. Join professionals, experts, and advisors who can help shape your career, offer resources to acquire new skills, and advance your professional development.



MEMBER BENEFITS

As an IEEE member, you'll be presented with new resources, valuable opportunities, and many discounts that will help you advance your career in the right direction. You can find colleagues who share your vision and commitment—those who are moving technology forward today.



ENHANCE YOUR MEMBERSHIP- JOIN AN IEEE SOCIETY

IEEE Societies provide members with opportunities to connect with experts and network with colleagues locally and abroad—all while staying up-to-date on technology and trends in their industry.



GIFT OF MEMBERSHIP

IEEE membership delivers access to the industry's most essential technical information and provides networking opportunities both locally and globally. Members have the ability to stay current in their chosen profession, connect with peers, and invest in their future.



MEMBER-GET-A-MEMBER

Consider sharing your IEEE membership experience and get rewarded for doing so. Through the Member-Get-a-Member (MGM) program, IEEE rewards your efforts in recruiting new members. Your local IEEE Section can also benefit.



IEEE.tv

Made possible by IEEE members, IEEE.tv is an award-winning, Internet-based television network, producing special-interest programming about technology and engineering for IEEE members and the general public.

Get access with new resources, valuable opportunities, and many discounts that will help you advance your career in the right direction.

WHEN YOU JOIN IEEE, YOU:

- Join a community of over 425,000 technology and engineering professionals united by a common desire to continuously learn, interact, collaborate, and innovate
- Get the resources and opportunities you need to keep on top of changes in technology
- Get involved in standards development
- Network with other professionals in your local area or within a specific technical interest
- Mentor the next generation of engineers and technologists and so much more.

IEEE members can access information on local events and activities by signing in to myIEEE, the members' personalized gateway to IEEE membership. In addition, members can also:

- Access individual Society memberships and subscriptions
- Connect with local IEEE Sections and volunteer leadership
- Find upcoming conferences
- Learn more about individual benefits
- Read the latest news from IEEE, IEEE Spectrum, IEEE Standards News, and The Institute

No need to over-engineer this.

Satisfaction will increase with exclusive IEEE member discounts and insurance.

Special, low pricing creates high value for IEEE Members.* Tap into exclusive member discounts on products and services from trusted brands.

*Where available



Leverage your IEEE membership today!
Visit ieee.org/discounts and learn how this inverse relationship can be a proven formula.

You've Always Set Yourself Apart. Now it's Time to make it Official. Nominate Yourself to become a...

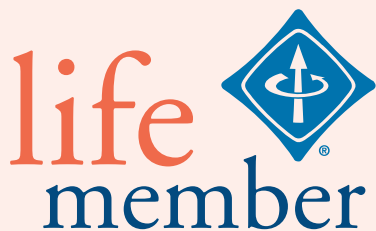
IEEE SENIOR MEMBER



Being elevated to senior member recognizes people who have moved beyond entry-level work in their careers. It also encourages them to engage more broadly with engineers and other technical professionals in companies and universities outside their own. To be eligible for senior member status, members must have worked in a professional capacity in a technical field for at least 10 years. Educational experience is partially credited toward that time. Nominees must also have professional references from three IEEE senior members, Fellows, or honorary members. If you're interested in elevation, you don't have to wait to be nominated—you can nominate yourself.

>> APPLY FOR SENIOR MEMBER GRADE

IEEE LIFE MEMBERS, *WRITE FOR THE PULSE!*



The Section is inviting you to record your stories and histories in our monthly publication, the *Long Island Pulse*. An article of approximately 300 – 350 words is recommended.

LET US HEAR FROM YOU.

Send your article to: pulse@ieee.li
Life Member Chair: life@ieee.li

The **IEEE Long Island Section** has held meetings with many of our Life Members and Senior Engineers, in recent months. Your stories and histories in engineering are interesting, inspiring and should be recorded for future generations. You have served your profession for many years, many have served our country in the military, many as engineers fighting the Cold War. The many contributions are the legacy to this new digital age, space age, environmental age and beyond.

WANTED: IEEE LIFE MEMBER NEEDED TO VOLUNTEER TO SUBMIT A MONTHLY HISTORY ARTICLE FOR THE PULSE

The **PULSE** is seeking a IEEE LI Life Member to write the *Long Island Electrical & Electronic History* monthly article for the **Pulse**. If interested contact pulse@ieee.li

WE WANT YOUR STORIES


**IEEE
CONSULTANTS
NETWORK OF
LONG ISLAND**
THE IEEE CONSULTANTS NETWORK OF LONG ISLAND (LICN)

is a nonprofit professional organization affiliated with the Institute of Electrical and Electronics Engineers. Our members include dozens of electrical, electronic, mechanical and software engineers with expertise in over 65 categories of technology and business. All are members of the IEEE and adhere to the IEEE professional codes of ethics.

MEMBER
IEEE L.I. CONSULTANTS NETWORK


**PETER BUITENKANT
CONSULTANT**

MICROPROCESSOR HARDWARE / SOFTWARE DESIGNS
DIGITAL CIRCUIT DESIGN • TRAINING COURSES

WEBSITE: www.peterbui-consult.com

24 Thorngrove Lane
Dix Hills, NY 11746

VOICE: (631) 491-3414
EMAIL: peterbui@optonline.net

(516) 378-0979

ambertec@ieee.org

Ambertec, P.E.P.C.

John Dunn – MSEE, PE

Member IEEE Consultants Network of Long Island

www.licn.org/Profile/JDunn

181 Marion Avenue

Merrick, NY 11566

Real Time Embedded - Financial Services - Transit
Architecture - Object Oriented Design - Java - C/C++
Full Stack - Internet of Things - Mobile Applications
Unix/Linux - Windows - Compilers - Communications


EARLY ELECTRONICS

Hardware / Software Consulting Services

Chris Early, BSEE, MSCS, PE
154 Hempstead Avenue
Rockville Centre, NY 11570

unixdev@ix.netcom.com
Voice: (516) 764-1067
Fax: (516) 764-1124

SIGNALS IN MOTION

Len Anderson
President



PHONE: 718-279-3953
FAX: 509-471-6496
E-MAIL: LenAnderson@SignalsInMotion.com
WEBSITE: www.SignalsInMotion.com

BODNER & O'ROURKE, LLP
PATENTS, TRADEMARKS, COPYRIGHTS
AND RELATED MATTERS

GERALD T. BODNER
PATENT ATTORNEY

425 BROADHOLLOW ROAD, SUITE 120

MELVILLE, NY 11747

TEL: (631) 249-7500

FAX: (631) 249-4508

gbodner@bodnerorourke.com

ADVANCE IN TECHNOLOGY, INC.
Electronic Design — Analog, Digital, RF and Systems

JOHN LIGUORI
CEO, MSEE
631-865-2423

82 Westwood Avenue, Deer Park, NY 11729

www.advance-in-technology.com

JLiguori@advance-in-technology.com

Broad Shoulder Consulting LLC

Electronics, Mechanics, Optics, Software

www.broshoco.com

Special Expertise in Medical Imaging
System Design, Prototyping and Production
Serving Start-ups and Technology Investors

Dmitriy Yavid
Founder
631-706-4696
dy@broshoco.com



Broad Shoulder Consulting, LLC
Long Island High Tech Incubator
25 Health Science Drive
Mail Box 320
Stony Brook, NY 11790-3350

Fred Katz Consulting, Inc.

93 Steven Place West

Hempstead, NY 11788

Proposals, Contracts & Specification Development
Innovative Creation, Electro-Mechanical
Analog & Digital Circuit/System Design
Wireless, Motion, Occupancy Sensors
System Analysis/Documentation
Commercial/Military Product Design
Sonar Systems and Acoustic Signal Processing
Security, Marine & Energy Saving, ROHS, UL Testing
Clever Inventions, Algorithm, IP & Patent Development



fred@fredkatzconsulting.com

www.fredkatzconsulting.com

Fred Katz

(631) 724-7702

Electronics

Consultant

Memberships: IEEE Senior Life Member, IEEE LI Consultants Network, LI Metal Workers, Mensa Society, NYS Professional Inventors, Suffolk County Inventors

EXPERT WITNESS

TECHNICAL INVESTIGATOR

MARTIN KANNER AE, EE, MEE

PRODUCT LIABILITY
MACHINE INJURY

FIRE DAMAGE INJURY
LIGHTNING DAMAGE



sixxpoppy@juno.com

(516) 681-4346

POWER –CONTROLS DIV.

42 Glenwood Road
Plainview, NY 11803

EEDEngineering - Quality Software/Testing Solutions

Andrew Franklin Baxt
Managing Director of Engineering

Phone: 516-678-6563
Mobile: 561-558-3499
Oceanside, New York 11572
Andrew.Baxt@EEDEngineering.com
www.EEDEngineering.com

Carl Meshenberg
Technology Consulting Services

Electronic Product Development
Project Management
Marketing Strategies
Contract Development & Oversight

Mobile: 516 383-2595
carl.jmesh@gmail.com

**PROGRAMMING
PLUS®**

2503 AVENUE X
BROOKLYN, NY 11235

HARDWARE & SOFTWARE CONSULTING

- ADMINISTRATION • DATABASES • UNIX
- DEVELOPMENT • NETWORKS • LINUX
- ENGINEERING • INTERNET • VMS
- INTEGRATION • SECURITY • WINDOWS

For expert assistance, contact **Robert Weiner**, EE, PE, at:

Tel: (718) 648-6902 Email: info@progplus.com
Fax: (718) 648-7449 Web: www.progplus.com

**IEEE Consultants
Network of Long Island**

PO Box 411, Malverne NY 11565-0411

www.licn.org

(516) 379-1678

Be sure to visit our web Blog at:
licn.typepad.com/my_weblog



Affiliated with the Institute of Electrical
and Electronics Engineers, Inc.



John F. Vodopia, Esq.

Intellectual Property Law Firm

133C New York Avenue
Huntington, NY 11743

631-673-7555 ext: 5
631-327-6197 (Mobile)
631-425-7030 (Fax)

jvodopia@gmail.com
jvodopia@ieee.org