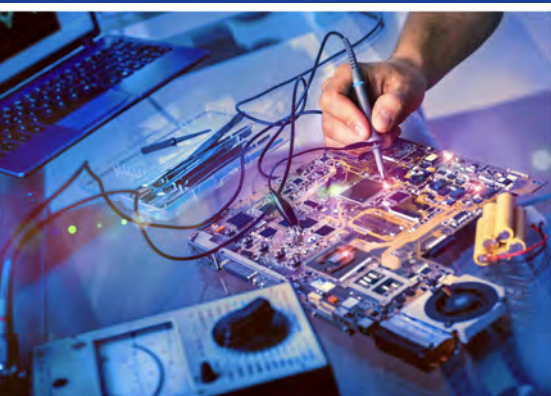




THE PULSE

MAY 2022 | VOL. 69, NO. 5

OF LONG ISLAND



INSIDE THIS ISSUE

- + IEEE LI Section **Chair's Message** | 2
- + **Event Calendar** | 5
- + **Power Electronics Symposium** | 7
- + **Member Benefits** | 8
- + **Become A Senior Member** | 9



April has seen a return to near normalcy for us all. Our first live event occurred at the end of March, as I mentioned last month. Photos from the Banquet will be posted shortly, but this one of the room shows just how eager members were for a return to live events. It is gratifying to see that the room was near capacity, and I hope no one suffered any exposure to Covid as a result.



2022 IEEE Long Island Section Awards Banquet, March 31, 2022
at Crest Hollow Country Club

Coming up this week is the return of **LISAT** as well. If you haven't registered, there is still time. Registration is open up until May 6, the actual day of the conference. Register at the [LISAT registration page](#) or on [vtools](#).

As I previously mentioned, the **PACE Committee** will be rejuvenated for the Section. I am still looking for volunteers to be the Section's PACE chair for the region. Plans are in the offing for at least two events, a design competition and a social gathering, but more work needs to be done to bring them to fruition.

Lastly, I want to stress the goals of membership development and event reporting. The Section's vitality depends on restoring the activities that were so in abeyance over the last two years. Although Covid still presents a risk, it is more manageable given our current knowledge. Safe practices will see a return to the Section we remember.

Arnold Stillman
IEEE Long Island Section Chair, 2022

THE PULSE OF LONG ISLAND



The Pulse of Long Island is produced by the Long Island Section of the **Institute of Electrical & Electronics Engineers**. It is published monthly except during July & August.

Arnold Stillman, Editor
pulse@ieee.li

Anthony Giresi, Graphic Designer
pulse@ieee.li

The opinions expressed in this newsletter are those of the authors, and no endorsement by IEEE, its officials, or its members is implied. IEEE prohibits discrimination, harassment, and bullying. For more information on IEEE policies, please visit www.ieee.org.

IEEE Long Island Section reserves the right to decide whether or not to publish any content in our sole discretion. Any contributed content may be edited before publishing.



INSTITUTE OF ELECTRICAL & ELECTRONICS ENGINEERS

445 Hoes Lane, Piscataway, NJ 08855-1331

Phone (USA & Canada): 1-800-678-4333

Phone (Worldwide): 1-732-981-0060

Website: www.ieee.org

E-mail: contactcenter@ieee.org

IEEE LONG ISLAND SECTION OFFICERS

CHAIR
ARNOLD STILLMAN
CHAIR@IEEE.LI

SECRETARY
RHONDA GREEN
SECRETARY@IEEE.LI

VICE CHAIR
RHONDA GREEN

JUNIOR PAST CHAIR
LOU D'ONOFRIO

TREASURER
SANTO MAZZOLA
TREASURER@IEEE.LI

SENIOR PAST CHAIR
MARJANEH ISSAPOUR

AFFINITY GROUPS and COMMITTEES

AWARDS COMMITTEE
RHONDA GREEN
AWARDS@IEEE.LI

MEMBERSHIP DEVELOPMENT
CARL MESHENBERG
MEMBERSHIP@IEEE.LI

EDUCATIONAL ACTIVITIES
MARJANEH ISSAPOUR
EDUCATION@IEEE.LI

PROFESSIONAL SOCIETY & INDUSTRY LIAISON
BILL WILKES SR.
LIAISON@IEEE.LI

EMPLOYMENT ASSISTANCE
CHARLES PLECKAITIS
EAC@IEEE.LI

STUDENT DEVELOPMENT ACTIVITIES
JAMES MARTINO
STUDENT@IEEE.LI

ENTREPRENEUR NETWORK
BILL WILKES SR.
EN@IEEE.LI

WOMEN IN ENGINEERING (WIE)
MIHAELA RADU
WIE@IEEE.LI

LEGAL AFFAIRS
JOHN VODOPIA
LEGAL@IEEE.LI

LIFE MEMBERS
DON GRIECO
LIFE@IEEE.LI

YOUNG PROFESSIONALS
LONNI CHU
YP@IEEE.LI

www.ieee.li

THE IEEE LONG ISLAND SECTION WEBSITE

The IEEE LI Section website is regularly updated to reflect recent section activity and upcoming events. Each Society and Affinity Group has a dedicated page that describes their function and includes contact information.

www.consult-li.com

CONSULTANT'S NETWORK OF LONG ISLAND

The Consultant's Network of Long Island maintains a referral service of engineering, computer, managerial and technical professionals.

membership@ieee.li

MEMBERSHIP DEVELOPMENT

For more information on membership with the LI Section of the IEEE, e-mail Carl Meshenberg at: membership@ieee.li

 <p>AEROSPACE & ELECTRONIC SYSTEMS SOCIETY (AES) Chair: Dave Mesecher Vice Chair: Vacant Email: aes@ieee.li</p>	 <p>ANTENNAS AND PROPAGATION SOCIETY (APS) Chair: Sai Padmanabhan Vice Chair: Bryan Tropper Email: ap@ieee.li</p>	 <p>CIRCUITS AND SYSTEMS SOCIETY (CAS) Chair: James Colotti Vice Chair: Pawel Janczykowski Email: cas@ieee.li</p>	 <p>COMMUNICATIONS SOCIETY (COMSOC) Chair: Howard Hausman Vice Chair: Tony Bowden Email: communications@ieee.li</p>
 <p>COMPUTER SOCIETY (CS) Chair: Barbara Porter Vice Chair: Brian Quinn Email: computer@ieee.li</p>	 <p>ELECTROMAGNETIC COMPATIBILITY SOCIETY (EMCS) Chair: James Colotti Vice Chair: Bob DeLisi Email: emc@ieee.li</p>	 <p>ENGINEERING IN MEDICINE & BIOLOGY SOCIETY (EMBS) Chair: John Vodopia Vice Chair: Vacant Email: emb@ieee.li</p>	 <p>INSTRUMENTATION AND MEASUREMENT SOCIETY (IMS) Chair: Joe Jordan Vice Chair: Ephraim Adeola Email: im@ieee.li</p>
 <p>MICROWAVE THEORY AND TECHNIQUES SOCIETY (MTT) Chair: Sai Padmanabhan Vice Chair: Eric Darvin Email: mtt@ieee.li</p>	 <p>NUCLEAR AND PLASMA SCIENCES SOCIETY (NPS) Chair: Graham Smith Vice Chair: Vacant Email: nps@ieee.li</p>	 <p>PHOTONICS SOCIETY (IPS) Chair: Adam A. Filos Vice Chair: M. Nazrul Islam Email: photonics@ieee.li</p>	 <p>POWER & ENERGY/INDUSTRY APPLICATIONS SOCIETY (PES & IAS) Chair: Lou D'Onofrio Vice Chair: Marjaneh Issapour Email: power@ieee.li</p>
 <p>POWER ELECTRONICS SOCIETY (PELS) Chair: Ronald DeLuca Vice Chair: Predrag Hadzibabic Email: pels@ieee.li</p>	 <p>PRODUCT SAFETY ENGINEERING SOCIETY (PSES) Chair: Tom Lanzisero Vice Chair: Vacant Email: safety@ieee.li</p>	 <p>SIGNAL PROCESSING SOCIETY (SPS) Chair: Jessica Donaldson Vice Chair: Dave Mesecher Email: signal@ieee.li</p>	 <p>SOCIAL IMPLICATIONS OF TECHNOLOGY SOCIETY (SSIT) Chair: Howard Edelman Vice Chair: John Vodopia Email: social@ieee.li</p>
<p>The Long Island Section of IEEE has 18 Chapters. Each Chapter is a technical subunit of the Long Island Section, associated with an IEEE Society. The Chapters, as well as the Section, are always welcoming volunteers. If you would like to help with any of the Long Island Chapter's steering groups, please do contact the relevant Chapter Chair, Vice Chair, or one of the Section officers.</p>		 <p>SYSTEMS COUNCIL (SYSC) Chair: Stephanie White Vice Chair: Vacant Email: systems@ieee.li</p>	 <p>TECHNOLOGY & ENGINEERING MANAGEMENT SOCIETY (TEMS) Chair: Brian Quinn Vice Chair: Barbara Porter Email: tmc@ieee.li</p>

TAP. CONNECT. NETWORK. SHARE.



Connect to IEEE—no matter where you are—with the IEEE App.

The IEEE App connects you to the world's largest professional technology community. Stay informed with cutting-edge content from IEEE Spectrum, IEEE Transmitter, and more. Receive personalized technology and engineering content relevant to your activities and interests and stay connected to your tech community.



FRIDAY, MAY 6, 2022

LISAT 2022

Sixteenth Annual IEEE Long Island Systems, Applications and Technology Conference

HELD AT NEW YORK INSTITUTE OF TECHNOLOGY, OLD WESTBURY, NEW YORK

For more information:
www.ieee.li/pes

IEEE POWER ELECTRONICS SOCIETY

THURSDAY, NOVEMBER 3, 2022 POWER ELECTRONICS SYMPOSIUM (PES)

The annual PELS PES has been rescheduled for November 3, 2022 because of concerns regarding the on-going COVID pandemic. After careful review of the issues hosting this event the PES committee has decided to take a safe conservative approach and postpone this event to 2022 when we have a better handle on the limitations with regard to social interaction. While this was a difficult decision the committee is ensuring that the high standards with regard to; number of exhibitors and participant attendance and robust presentations we developed over the previous events will be maintained when we host again.

While we are all anxious to get back to our "Normal" industry dynamics, rest assured we are committed to continuing with the annual PES event. Please keep an eye out for future announcements on the future date for the PES and other PELS events.

FOR UPDATES ON ALL
LONG ISLAND SECTION
EVENTS, CHECK OUT
THE IEEE LONG ISLAND
SECTION WEBSITE:

www.ieee.li



EXCLUSIVE BENEFIT
FOR IEEE MEMBERS

IEEE
JobSite
The Right Candidate - Right Now!

TAKE THE NEXT STEP TO
FINDING YOUR DREAM JOB!



Post your job profile free
today at www.ieee.org/jobs

LET YOUR VOICE BE HEARD

WRITE TO THE PULSE

The Pulse of Long Island is a newsletter for the members of the IEEE Long Island Section. You can let your voice heard by writing to the Editor. How to bring more value to our members? Interesting new technology, or a project? An issue of interest to members of the IEEE Long Island, Long Island engineers and computer professionals, or Long Island technical community at large? Write to the **Pulse**. Let your letter be read, and your voice heard.

HOW CAN I CONTRIBUTE TO THE PULSE?

Send your letters or articles via email to pulse@ieee.li. If selected for publication, the letter or article will be edited before being published.



ADVERTISERS:

Please contact us at pulse@ieee.li for advertising rates.



CONTRIBUTION DEADLINE:

20th of a month for the next month edition.

CONTRIBUTIONS FROM LONG ISLAND TECHNICAL & ENGINEERING COMPANIES:

Publish your technology-related press release (up to one page) at no cost. Please send the press release as a PDF file attached to email to pulse@ieee.li, addressed to the Editor, with a Subject line "**Pulse -PR**" followed by your company name, and the responsible contact person's name, email and phone number in the email body.



THE **PULSE**
OF LONG ISLAND

CONTRIBUTE TO THE PULSE – LET YOUR LETTER BE READ and LET YOUR YOUR VOICE BE HEARD

For more information:
www.ieee.li/pes



THURSDAY, NOVEMBER 3, 2022 • RADISSON HOTEL, 110 MOTOR PKWY, HAUPPAUGE LI • NOON TO 8 PM

IEEE LI SECTION **POWER ELECTRONICS SYMPOSIUM 2022**

All professionals (engineers, managers, etc.) involved in the use, design, qualification, test or manufacture of power supplies, power converters, power management, servos or energy storage are invited. All sectors of power electronics are represented including military, industrial, medical, space, consumer and automotive.

CALL FOR PAPERS

Abstract, viewgraphs, speaker bios and speaker contact information are due **October 10, 2022**. Scheduling of qualified papers is accomplished on a first-come/first-served basis. Notification of acceptance by **October 21, 2022**.



FREE GENERAL ATTENDANCE REGISTRATION OPENS AUGUST 2022

A free invitation is extended to all Engineers, Managers, other Professionals and Students involved in the use, design, qualification, test or manufacture of power supplies, power converters, power management or energy storage. Registered attendees will receive complimentary networking lunch, admission to the exhibit floor, technical lectures, and a complimentary networking dinner.



EXHIBITORS REGISTRATION OPENS JUNE 2022

Limited exhibitor space is available to Long Island companies and reps that cover Long Island involved in the design, qualification, test or manufacture of power supplies, power converters, power management or energy storage. Tables are 2.5' x 8' and are provided with two chairs. All exhibitors are invited to provide business cards and giveaways for the swag bags. Exhibitors are also invited to enjoy the complimentary networking lunch and the complimentary networking dinner. Exhibitor tables are offered at \$400



SPONSORS REGISTRATION OPENS JUNE 2022

A sponsorship entitles you to one free table with preferential placement. In addition, your company logo is prominently placed on the 200 swag bags, symposium flyer, and on all event posters. As a sponsor, you are also entitled to have up to two business cards and two items placed in the event swag bags. The number of sponsorship opportunities is limited to five and are available on a first-come, first-served basis. Sponsorships are offered at \$1000.

FOR MORE INFORMATION, GENERAL REGISTRATION, EXHIBITOR REGISTRATION, SPONSOR REGISTRATION AND CALL FOR PAPERS: www.ieee.li/pes

IEEE MEMBERSHIP and MEMBER BENEFITS

IEEE membership offers access to technical innovation, cutting-edge information, networking opportunities, and exclusive member benefits. Members support IEEE's mission to advance technology for humanity and the profession, while memberships build a platform to introduce careers in technology to students around the world.



JOIN IEEE OR RENEW YOUR MEMBERSHIP

Reach your full potential as part of the world's largest technology community. Join professionals, experts, and advisors who can help shape your career, offer resources to acquire new skills, and advance your professional development.



MEMBER BENEFITS

As an IEEE member, you'll be presented with new resources, valuable opportunities, and many discounts that will help you advance your career in the right direction. You can find colleagues who share your vision and commitment—those who are moving technology forward today.



ENHANCE YOUR MEMBERSHIP—JOIN AN IEEE SOCIETY

IEEE Societies provide members with opportunities to connect with experts and network with colleagues locally and abroad—all while staying up-to-date on technology and trends in their industry.



GIFT OF MEMBERSHIP

IEEE membership delivers access to the industry's most essential technical information and provides networking opportunities both locally and globally. Members have the ability to stay current in their chosen profession, connect with peers, and invest in their future.



MEMBER-GET-A-MEMBER

Consider sharing your IEEE membership experience and get rewarded for doing so. Through the Member-Get-a-Member (MGM) program, IEEE rewards your efforts in recruiting new members. Your local IEEE Section can also benefit.



IEEE.tv

Made possible by IEEE members, IEEE.tv is an award-winning, Internet-based television network, producing special-interest programming about technology and engineering for IEEE members and the general public.

Get access with new resources, valuable opportunities, and many discounts that will help you advance your career in the right direction.

WHEN YOU JOIN IEEE, YOU:

- Join a community of over 425,000 technology and engineering professionals united by a common desire to continuously learn, interact, collaborate, and innovate
- Get the resources and opportunities you need to keep on top of changes in technology
- Get involved in standards development
- Network with other professionals in your local area or within a specific technical interest
- Mentor the next generation of engineers and technologists and so much more.

IEEE members can access information on local events and activities by signing in to myIEEE, the members' personalized gateway to IEEE membership. In addition, members can also:

- Access individual Society memberships and subscriptions
 - Connect with local IEEE Sections and volunteer leadership
 - Find upcoming conferences
- Learn more about individual benefits
- Read the latest news from IEEE, IEEE Spectrum, IEEE Standards News, and The Institute

No need to over-engineer this.

Satisfaction will increase with exclusive IEEE member discounts and insurance.

Special, low pricing creates high value for IEEE Members.* Tap into exclusive member discounts on products and services from trusted brands.

*Where available



Leverage your IEEE membership today!
Visit ieee.org/discounts and learn how this inverse relationship can be a proven formula.

You've Always Set Yourself Apart. Now it's Time to make it Official. Nominate Yourself to become a...

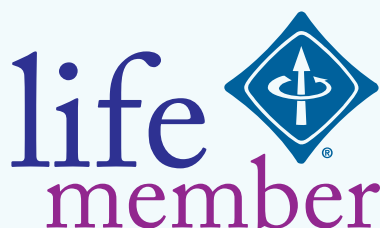
IEEE SENIOR MEMBER



Being elevated to senior member recognizes people who have moved beyond entry-level work in their careers. It also encourages them to engage more broadly with engineers and other technical professionals in companies and universities outside their own. To be eligible for senior member status, members must have worked in a professional capacity in a technical field for at least 10 years. Educational experience is partially credited toward that time. Nominees must also have professional references from three IEEE senior members, Fellows, or honorary members. If you're interested in elevation, you don't have to wait to be nominated—you can nominate yourself.

>> APPLY FOR *SENIOR MEMBER GRADE*

IEEE LIFE MEMBERS, *WRITE FOR THE PULSE!*



The Section is inviting you to record your stories and histories in our monthly publication, the *Long Island Pulse*. An article of approximately 300 – 350 words is recommended.

LET US HEAR FROM YOU.

Send your article to: pulse@ieee.li
Life Member Chair: life@ieee.li

The **IEEE Long Island Section** has held meetings with many of our Life Members and Senior Engineers, in recent months. Your stories and histories in engineering are interesting, inspiring and should be recorded for future generations. You have served your profession for many years, many have served our country in the military, many as engineers fighting the Cold War. The many contributions are the legacy to this new digital age, space age, environmental age and beyond.

WANTED: IEEE LIFE MEMBER NEEDED TO VOLUNTEER TO SUBMIT A MONTHLY HISTORY ARTICLE FOR THE *PULSE*

The **PULSE** is seeking a IEEE LI Life Member to write the *Long Island Electrical & Electronic History* monthly article for the **Pulse**. If interested contact pulse@ieee.li

WE WANT YOUR STORIES



IEEE CONSULTANTS NETWORK OF LONG ISLAND

THE IEEE CONSULTANTS NETWORK OF LONG ISLAND (LICN)

is a nonprofit professional organization affiliated with the Institute of Electrical and Electronics Engineers. Our members include dozens of electrical, electronic, mechanical and software engineers with expertise in over 65 categories of technology and business. All are members of the IEEE and adhere to the IEEE professional codes of ethics.

MEMBER
IEEE L.I. CONSULTANTS NETWORK



PETER BUITENKANT CONSULTANT

MICROPROCESSOR HARDWARE / SOFTWARE DESIGNS
DIGITAL CIRCUIT DESIGN • TRAINING COURSES

WEBSITE: www.peterbui-consult.com

24 Thorngrove Lane
Dix Hills, NY 11746

VOICE: (631) 491-3414
EMAIL: peterbui@optonline.net

(516) 378-0979

ambertec@ieee.org

Ambertec, P.E.P.C.

John Dunn – MSEE, PE

Member IEEE Consultants Network of Long Island
www.licn.org/Profile/JDunn

181 Marion Avenue

Merrick, NY 11566

Real Time Embedded - Financial Services - Transit
Architecture - Object Oriented Design - Java - C/C++
Full Stack - Internet of Things - Mobile Applications
Unix/Linux - Windows - Compilers - Communications



EARLY ELECTRONICS

Hardware / Software Consulting Services

Chris Early, BSEE, MSCS, PE
154 Hempstead Avenue
Rockville Centre, NY 11570

unixdev@ix.netcom.com
Voice: (516) 764-1067
Fax: (516) 764-1124

SIGNALS IN MOTION

Len Anderson
President



PHONE: 718-279-3953
FAX: 509-471-6496
E-MAIL: LenAnder@SignalsInMotion.com
WEBSITE: www.SignalsInMotion.com

BODNER & O'ROURKE, LLP
PATENTS, TRADEMARKS, COPYRIGHTS
AND RELATED MATTERS

GERALD T. BODNER PATENT ATTORNEY

425 BROADHOLLOW ROAD, SUITE 120
MELVILLE, NY 11747
TEL: (631) 249-7500
FAX: (631) 249-4508
gbodner@bodnerorourke.com

ADVANCE IN TECHNOLOGY, INC.

Electronic Design — Analog, Digital, RF and Systems

JOHN LIGUORI
CEO, MSEE
631-865-2423

82 Westwood Avenue, Deer Park, NY 11729

www.advance-in-technology.com

JLiguori@advance-in-technology.com

Broad Shoulder Consulting LLC

Electronics, Mechanics, Optics, Software
www.broshoco.com

Special Expertise in Medical Imaging
System Design, Prototyping and Production
Serving Start-ups and Technology Investors

Dmitriy Yavid
Founder
631-706-4696
dy@broshoco.com



Broad Shoulder Consulting, LLC
Long Island High Tech Incubator
25 Health Science Drive
Mail Box 320
Stony Brook, NY 11790-3350

Fred Katz Consulting, Inc.

93 Steven Place West Hauppauge, NY 11788

Proposals, Contracts & Specification Development
Innovative Creation, Electro-Mechanical
Analog & Digital Circuit/System Design
Wireless, Motion, Occupancy Sensors
System Analysis/Documentation
Commercial/Military Product Design
Sonar Systems and Acoustic Signal Processing
Security, Marine & Energy Saving, ROHS, UL Testing
Clever Inventions, Algorithm, IP & Patent Development



fred@fredkatzconsulting.com

www.fredkatzconsulting.com

Fred Katz
President

(631) 724-7702

Electronics
Consultant

Memberships: IEEE Senior Life Member, IEEE LI Consultants Network, LI Metal
Workers, Mensa Society, NYS Professional Inventors, Suffolk County Inventors

EXPERT WITNESS

TECHNICAL INVESTIGATOR

MARTIN KANNER AE, EE, MEE

PRODUCT LIABILITY
MACHINE INJURY

FIRE DAMAGE INJURY
LIGHTNING DAMAGE



sixxpoppy@juno.com

(516) 681-4346

POWER – CONTROLS DIV.
42 Glenwood Road
Plainview, NY 11803

EEDEngineering - Quality Software/Testing Solutions

Andrew Franklin Baxt
Managing Director of Engineering

Phone: 516-678-6563
Mobile: 561-558-3499
Oceanside, New York 11572
Andrew.Baxt@EEDEngineering.com
www.EEDEngineering.com

Carl Meshenberg

Technology Consulting Services

Electronic Product Development
Project Management
Marketing Strategies
Contract Development & Oversight

Mobile: 516 383-2595
carl.jmesh@gmail.com

PROGRAMMING PLUS®

2503 AVENUE X
BROOKLYN, NY 11235

HARDWARE & SOFTWARE CONSULTING

- ADMINISTRATION • DATABASES • UNIX
- DEVELOPMENT • NETWORKS • LINUX
- ENGINEERING • INTERNET • VMS
- INTEGRATION • SECURITY • WINDOWS

For expert assistance, contact **Robert Weiner, EE, PE**, at:

Tel: (718) 648-6902 Email: info@progplus.com
Fax: (718) 648-7449 Web: www.progplus.com

IEEE Consultants Network of Long Island

PO Box 411, Malverne NY 11565-0411

www.licn.org

(516) 379-1678

Be sure to visit our web Blog at:
licn.typepad.com/my_weblog



Affiliated with the Institute of Electrical
and Electronics Engineers, Inc.



John F. Vodopia, Esq.

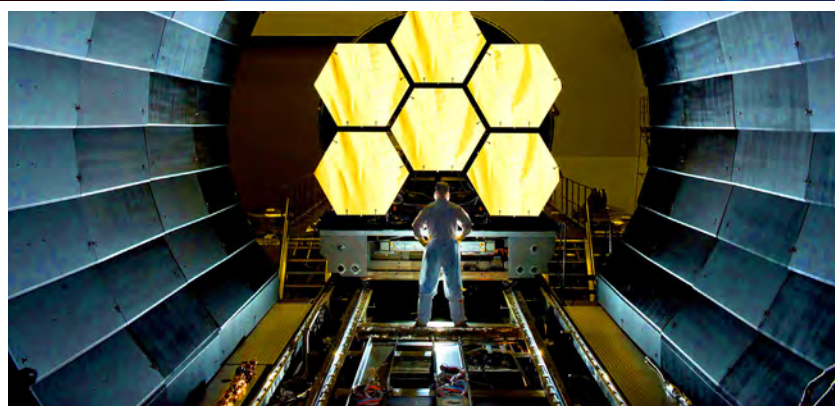
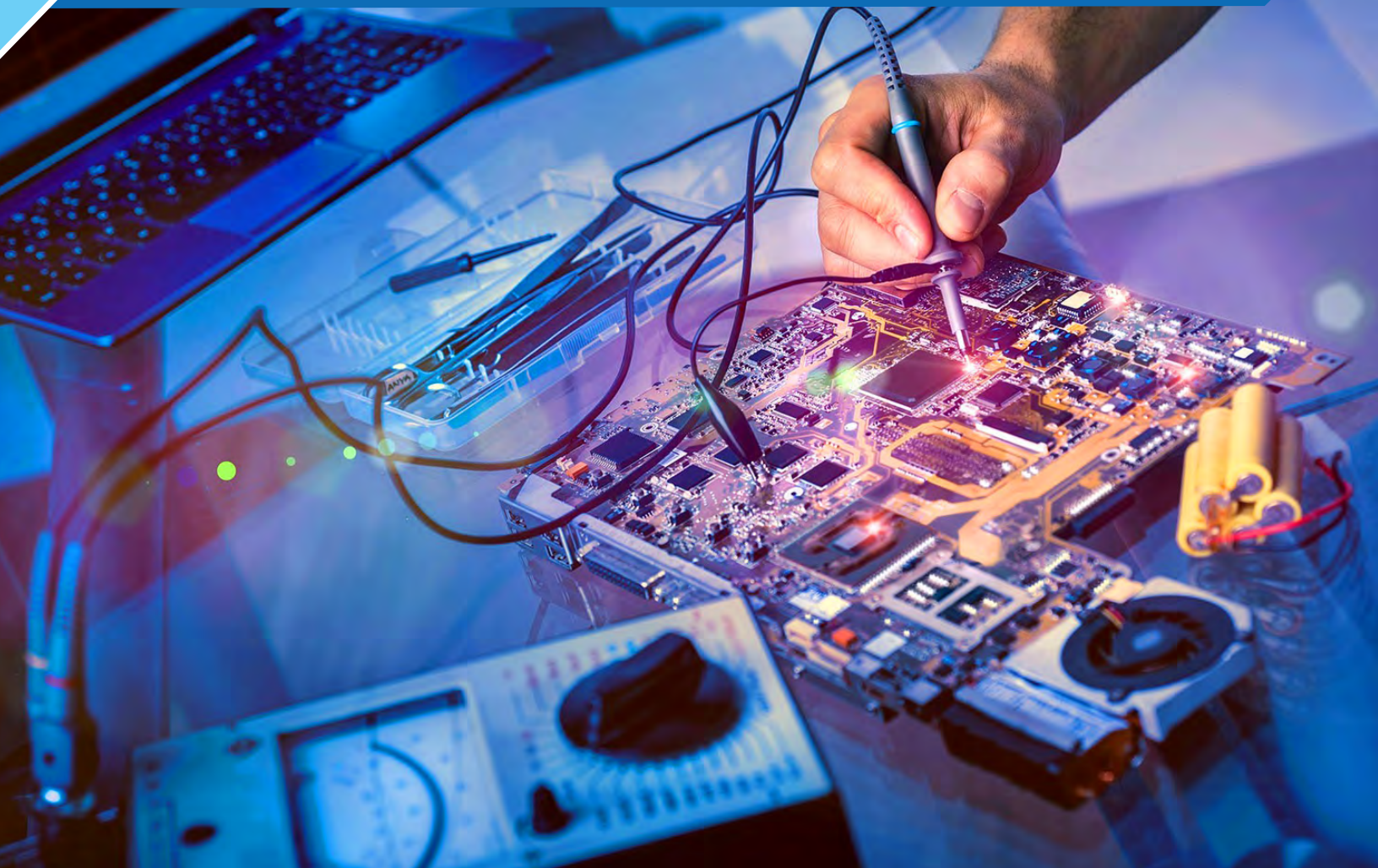
Intellectual Property Law Firm

133C New York Avenue
Huntington, NY 11743

631-673-7555 ext: 5
631-327-6197 (Mobile)
631-425-7030 (Fax)

jvodopia@gmail.com
jvodopia@ieee.org

PRODUCED BY THE LONG ISLAND SECTION OF THE INSTITUTE OF ELECTRICAL & ELECTRONICS ENGINEERS



THE PULSE

OF LONG ISLAND