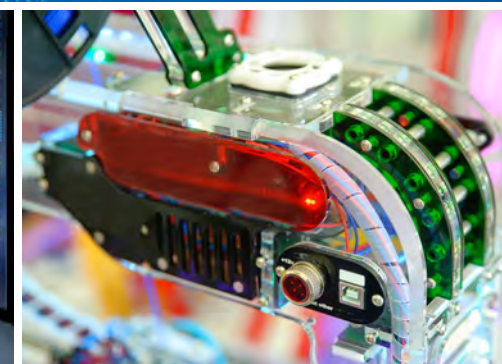
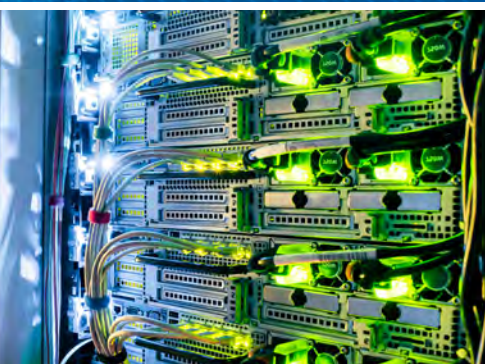




THE PULSE

MAY 2021 | VOL. 68, NO. 5

OF LONG ISLAND



INSIDE THIS ISSUE

- + IEEE LI Section **Chair's Message** | 2
- + **2021 REGION 1 AWARD NOMINATIONS** | 5
- + **IEEE POWER & ENERGY SOCIETY SCHOLARSHIP** | 6
- + **RON PIRICH IN MEMORIAM** | 7
- + **ZEBRA TECHNOLOGIES** and **DISCOUNT TIRE**
Unveil First Tire Inspection Mobile Computing Solution | 9
- + **Employment Opportunities: BAE Systems** | 13



2020 OUTSTANDING MEMBERSHIP
RETENTION PERFORMANCE
LONG ISLAND SECTION



Last year at this time, I quoted T.S.Eliot: *"April is the cruellest month."* This April again proves it so. **The Long Island Section** has lost a dedicated and involved volunteer with the passing of Ron Pirich on March 31. Ron was the Vice Chair of the Executive Committee and very involved in the workings of the Section. We will miss his valuable contributions to the IEEE through his membership on the Executive Committee and Section Chapters. Ron was always a level and composed voice and lent his reasonable manner to many aspects of the Section's operations. The family has requested that any donations to honor Ron be made to the **IEEE Foundation**.

On the brighter side of things, our year of pandemic is finally seeing some respite as things begin to open up again. We will start to plan in-person gatherings soon. For the time, meetings are still virtual and by that nature allow for attendance without geographic boundaries. This means that there are very many seminars, meetings and classes that have become available online. The challenge is how to attend so many. I would like to single out a couple that have the planning and involvement of Section members.

July 19 - 23

THE SIGNAL PROCESSING SOCIETY'S SCHOOL:

SIGNAL PROCESSING & COMMUNICATION SYSTEMS FOR 5G

Dr. Jess Donaldson, Dr. Alex Jung, and Dr. T.S.N. Murthy organizers

(Registration opening soon)

June 8

THE HAMPTONS OBSERVATORY LECTURE:

THE SKY: WHY IT MATTERS AND HOW WE MIGHT LOSE IT

Professor Andy Lawrence, University of Edinburgh

(technically not an IEEE event, but promoted locally by Carl Meshenberg)

In the coming months, we can look forward to the possibility of in-person events that are still in the planning stages. More on these in the next issue. As always, be safe and stay healthy.

Arnold Stillman

IEEE Long Island Section Chair, 2021

THE PULSE OF LONG ISLAND



The Pulse of Long Island is produced by the Long Island Section of the **Institute of Electrical & Electronics Engineers**. It is published monthly except during July & August.

Arnold Stillman, Editor
pulse@ieee.li

Anthony Giresi, Graphic Designer
pulse@ieee.li

The opinions expressed in this newsletter are those of the authors, and no endorsement by IEEE, its officials, or its members is implied. IEEE prohibits discrimination, harassment, and bullying. For more information on IEEE policies, please visit www.ieee.org.

IEEE Long Island Section reserves the right to decide whether or not to publish any content in our sole discretion. Any contributed content may be edited before publishing.



INSTITUTE OF ELECTRICAL & ELECTRONICS ENGINEERS

445 Hoes Lane, Piscataway, NJ 08855-1331

Phone (USA & Canada): 1-800-678-4333

Phone (Worldwide): 1-732-981-0060

Website: www.ieee.org

E-mail: contactcenter@ieee.org

IEEE LONG ISLAND SECTION OFFICERS

CHAIR
ARNOLD STILLMAN
chair@ieee.li

FIRST VICE CHAIR
RONALD PIRICH
vc@ieee.li

TREASURER
SANTO MAZZOLA
treasurer@ieee.li

SECRETARY
RHONDA GREEN
secretary@ieee.li

JUNIOR PAST CHAIR
LOU D'ONOFRIO

SENIOR PAST CHAIR
MARJANEH ISSAPOUR

AFFINITY GROUPS and COMMITTEES

EMPLOYMENT ASSISTANCE
CHARLES PLECKAITIS
eac@ieee.li

EDUCATIONAL ACTIVITIES
MARJANEH ISSAPOUR
education@ieee.li

ENTREPRENEUR NETWORK
BILL WILKES SR.

MEMBERSHIP DEVELOPMENT
CARL MESHENBERG
membership@ieee.li

YOUNG PROFESSIONALS
YASH CHOWDHURY
yp@ieee.li

LIFE MEMBERS
DON GRIECO
life@ieee.li

STUDENT DEVELOPMENT ACTIVITIES
GLENN LUCHEN
student@ieee.li

WOMEN IN ENGINEERING (WIE)
MIHAELA RADU
wie@ieee.li

AWARDS COMMITTEE
NIKOLAOS GOLAS
awards@ieee.li

PROFESSIONAL ACTIVITIES
NIKOLAOS GOLAS
pace@ieee.li

LEGAL AFFAIRS
JOHN VODOPIA
legal@ieee.li

www.ieee.li

THE IEEE LONG ISLAND SECTION WEBSITE

The IEEE LI Section website is regularly updated to reflect recent section activity and upcoming events. Each Society and Affinity Group has a dedicated page that describes their function and includes contact information.

www.licn.org

CONSULTANT'S NETWORK OF LONG ISLAND

The Consultant's Network of Long Island maintains a referral service of engineering, computer, managerial and technical professionals.

membership@ieee.li

MEMBERSHIP DEVELOPMENT

For more information on membership with the LI Section of the IEEE, e-mail Carl Meshenberg at: membership@ieee.li



IEEE LI SECTION SOCIETIES and CHAPTER OFFICERS



AEROSPACE & ELECTRONIC SYSTEMS SOCIETY (AES)

Chair: **Dave Mesecher**
Vice Chair: **Vacant**
Email: aes@ieee.li



ANTENNAS AND PROPAGATION SOCIETY (APS)

Chair: **Bryan Tropper**
Vice Chair: **Sai Padmanabhan**
Email: ap@ieee.li



CIRCUITS AND SYSTEMS SOCIETY (CAS)

Chair: **James Colotti**
Vice Chair: **Supriya Karmakar**
Email: cas@ieee.li



COMMUNICATIONS SOCIETY (COMSOC)

Chair: **Howard Hausman**
Vice Chair: **Tony Bowden**
Email: communications@ieee.li



COMPUTER SOCIETY (CS)

Chair: **Barbara Porter**
Vice Chair: **Brian Quinn**
Email: computer@ieee.li



ELECTROMAGNETIC COMPATIBILITY SOCIETY (EMCS)

Chair: **James Colotti**
Vice Chair: **Bob DeLisi**
Email: emc@ieee.li



ENGINEERING IN MEDICINE & BIOLOGY SOCIETY (EMBS)

Chair: **John Vodopia**
Vice Chair: **Vacant**
Email: emb@ieee.li



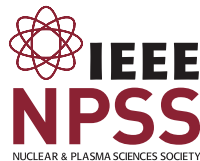
INSTRUMENTATION AND MEASUREMENT SOCIETY (IMS)

Chair: **Joe Jordan**
Vice Chair: **Ephraim Adeola**
Email: im@ieee.li



MICROWAVE THEORY AND TECHNIQUES SOCIETY (MTT)

Chair: **Saikumar Padmanabhan**
Vice Chair: **Eric Darvin**
Email: mtt@ieee.li



NUCLEAR AND PLASMA SCIENCES SOCIETY (NPS)

Chair: **Shaorui Li**
Vice Chair: **Graham Smith**
Email: nps@ieee.li



PHOTONICS SOCIETY (IPS)

Chair: **Adam A. Filos**
Vice Chair: **M. Nazrul Islam**
Email: photonics@ieee.li



POWER & ENERGY/INDUSTRY APPLICATIONS SOCIETY (PES & IAS)

Chair: **Marjaneh Issapour**
Vice Chair: **Lou D'Onofrio**
Email: power@ieee.li



POWER ELECTRONICS SOCIETY (PELS)

Chair: **Ronald DeLuca**
Vice Chair: **Predrag Hadzibabic**
Email: pels@ieee.li



PRODUCT SAFETY ENGINEERING SOCIETY (PSES)

Chair: **Tom Lanzisero**
Vice Chair: **Vacant**
Email: safety@ieee.li



SIGNAL PROCESSING SOCIETY (SPS)

Chair: **Jessica Donaldson**
Vice Chair: **Dave Mesecher**
Email: signal@ieee.li



SOCIAL IMPLICATIONS OF TECHNOLOGY SOCIETY (SSIT)

Chair: **Howard Edelman**
Vice Chair: **John Vodopia**
Email: social@ieee.li

The Long Island Section of IEEE has 18 Chapters. Each Chapter is a technical subunit of the Long Island Section, associated with an IEEE Society. The Chapters, as well as the Section, are always welcoming volunteers. If you would like to help with any of the Long Island Chapter's steering groups, please do contact the relevant Chapter Chair, Vice Chair, or one of the Section officers.



SYSTEMS COUNCIL (SYSC)

Chair: **Stephanie White**
Vice Chair: **Vacant**
Email: systems@ieee.li



TECHNOLOGY & ENGINEERING MANAGEMENT SOCIETY (TEMS)

Chair: **Brian Quinn**
Vice Chair: **Barbara Porter**
Email: tmc@ieee.li



IEEE REGION 1 AWARDS

The purpose of the **Region 1 Awards Program** is to publicly recognize professional and technical excellence and major accomplishments and contributions made by **Region 1 IEEE members**.

Region 1 of the IEEE bestows awards to its members in a variety of technical, managerial and professional categories which are described below. Nominations forms and other instructions can be found on the IEEE website: www.ieee.org and then ask for "**Region 1 Awards**" in the search box.

1a. TECHNOLOGICAL INNOVATION

(ACADEMIC)

For distinguished development, advancement and pursuit of the IEEE's technical objectives.

1b. TECHNOLOGICAL INNOVATION

(INDUSTRY or GOVERNMENT)

For significant patents, discovery of new devices, development of applications or exemplary contributions to industry or government.

1c. MANAGERIAL EXCELLENCE IN AN ENGINEERING ORGANIZATION

For managerial excellence in organization, leadership, design and development.

1d. OUTSTANDING TEACHING IN AN IEEE AREA OF INTEREST

(UNIVERSITY or COLLEGE)

For outstanding contributions to education in an area of interest to the IEEE.

1e. OUTSTANDING TEACHING IN AN IEEE AREA OF INTEREST

(PRE-UNIVERSITY or COLLEGE)

For improving communications between the IEEE and a student body; for support and service to a student body; for service and leadership to the student community.

1f. ENHANCEMENT OF THE RELATIONSHIP BETWEEN IEEE AND INDUSTRY

For significant contributions in an enhanced IEEE-Industry relationship.

1g. ENHANCEMENT OF THE IEEE OR ENGINEERING PROFESSION'S IMAGE WITH THE PUBLIC

For significant contributions in developing an IEEE-Public relationship.

1h. OUTSTANDING SUPPORT FOR THE MISSION OF THE IEEE, MGA, REGION 1 AND/OR SECTION

For outstanding service to the IEEE at the Chapter, Section, Region, MGA and/or National level.

NOMINATIONS

Send your nominations to the IEEE Long Island Section Awards Committee at awards@ieee.li. They will be reviewed by the Section's Awards Committee. **Nominations must be received on or before May 15, 2021.**

MORE INFORMATION AT:

<https://r1.ieee.org/r1-awards/r1-awards-2/>



IEEE Power & Energy Society SCHOLARSHIP PLUS INITIATIVE

IEEE POWER & ENERGY SOCIETY SCHOLARSHIP

Power and energy engineers work with some of today's most exciting technologies, developing solutions to problems that affect our lives and lifestyles.

The PES Scholarship Plus Initiative provides scholarships and real world experience to undergraduates who are interested in power and energy engineering careers. Our undergraduate engineering scholarships aim to accomplish this goal by attracting highly qualified engineering students to the field. These students are the very individuals who will one day develop new green technologies, build the smart grid and change the way we generate and utilize power.

The IEEE PES Scholarship Plus Initiative supports these promising students through financial assistance in the increasingly expensive enterprise of undergraduate studies.



SCHOLARSHIP REQUIREMENTS

You can apply for the PES Scholarship as early as your first year in college. First year students are very much encouraged to apply. You are eligible to receive the scholarship if:

- You're currently enrolled full-time at a university/college or community college.
- You'll be working toward an electrical engineering bachelor's degree (or first professional degree).
- You'll be a full-time student in the coming academic year at a university or college in the U.S., Puerto Rico, or Canada that offers undergraduate courses in power engineering.
- You're willing to take at least three of the power engineering courses for a total of nine or more credits.
- You're a U.S., Puerto Rican, or Canadian citizen or permanent resident and reside in IEEE Regions 1 through 7.
- Your current GPA is 3.0 or higher on a 4.0 scale (or equivalent)

FURTHER INFORMATION IS AVAILABLE AT:

<https://www.ee-scholarship.org/about-the-scholarship>.



For more information:
www.ieee.li/pes

THURSDAY, NOVEMBER 4, 2021 POWER ELECTRONICS SYMPOSIUM 2021

Arrive Anytime, Leave Anytime, from Noon to 8 PM

The Long Island Power Electronics Symposium and Exhibits is the area's premier annual event that brings together the local power electronics community.



September 9, 2021

IEEE-LI SECTION 2020/21 COMBINED AWARDS CEREMONY and DINNER

5:30 - 9:30 PM

WEDNESDAY, MAY 26 UNDEREXPLORED THREE-PHASE POWER FAILURE CONDITIONS

6:00 to 7:00 PM

Speaker: James Colotti, Telephonics

This virtual lecture is free and all are invited (CEU/PH Credit Available).

Advance registration is required & is available at:
<https://meetings.vtools.ieee.org/m/270985>



In Memoriam

RONALD PIRICH IEEE LI SENIOR MEMBER & VICE CHAIR

DR. RONALD GARY PIRICH, passed suddenly on Wednesday, March 31, 2021, just six weeks short of his 74th birthday. Ron was born on May 13, 1947, in Johnson City, New York. He attended SUNY Binghamton, where he earned a BA in Physics, BA in Mathematics, MA in Physics, and PhD in Physics, as well as a Post-Doctoral Research Fellowship from the University of Cincinnati.

Ron relocated to Long Island in 1977 and held various R&D positions for thirty-five years at the Northrop Grumman Corporation in Bethpage, until his retirement in 2012. While at Northrop Grumman, Ron served as a Technical Fellow responsible for research and development of enabling technologies, systems engineering and technical integration. He also served as a Mentor to a Northrop Grumman Intern on a 2011 Master of Engineering in Electrical Engineering and Computer Science Thesis at the Massachusetts Institute of Technology, a Co-Advisor on a 2010 PhD Thesis at the City University of New York's (CUNY) Graduate Center, mentored five Northrop Grumman Summer Interns, and was an active participant in the Science, Technology, Engineering, and Mathematics (STEM) Education Coalition program. He was a recipient of the prestigious 2008 Sixty Over Sixty Award for his lifetime contributions to education and science on Long Island, the 2010 IEEE Technology Innovation Award, and was the 2015 winner for Patent of the Year in the category of Energy and the Environment for the Long Island Technology Hall of Fame (LITHF). Ron held nine patents, several patents pending and is the author of more than 250 technical papers and



presentations. He received several NASA Technical Innovator Awards and the Best Paper Award at the 2010 Aerospace Conference. He was a Fellow of SPIE, the International Society for Optics and Photonics, a Senior Member of the IEEE, and was actively involved in local IEEE Conferences, Chairing the Technical Program Committee for the Long Island Systems, Applications and Technology Conference. He also served on and was Chairman of the CUNY Industrial Associates Board, as well as a member of the NYIT, Queens College and Briarcliffe College Advisory Boards. He was also the point of contact for industry/university grants to CUNY, UAlbany, Polytechnic Institute of New York University, Stony Brook University and the California Institute of Technology. After retiring from Northrop Grumman, Ron served as a Senior Research Advisor for the Long Island Forum for Technology, as well as an adjunct instructor of physics at St. Joseph's College, and most recently at SUNY Farmingdale.

He is survived by his beloved wife of 38 years, Donna Marie, and much loved sons, Christopher Ronald and Michael John, as well as cherished family members: Andrew and Carrie Pirich (brother and sister-in-law), nephew Drew Pirich (Carmela), niece Marla Gorton (Mitch), grand-nephews Spencer and Shane Gorton, and grand-niece Natalie Pirich. He is preceded in death by his parents Hilda and Andrew Pirich, Jr.

In lieu of flowers, donations in Ronald's memory can be made to the IEEE Foundation and would be appreciated by the family. Please follow the link to donate.
<https://www.ieeefoundation.org/how-to-give/tribute-giving>

LET YOUR VOICE BE HEARD

WRITE TO THE PULSE

The Pulse of Long Island is a newsletter for the members of the IEEE Long Island Section. You can let your voice heard by writing to the Editor. How to bring more value to our members? Interesting new technology, or a project? An issue of interest to members of the IEEE Long Island, Long Island engineers and computer professionals, or Long Island technical community at large? Write to the **Pulse**. Let your letter be read, and your voice heard.

HOW CAN I CONTRIBUTE TO THE PULSE?

Send your letters or articles via email to pulse@ieee.li. If selected for publication, the letter or article will be edited before being published.



ADVERTISERS:

Please contact us at pulse@ieee.li for advertising rates.



CONTRIBUTION DEADLINE:

20th of a month for the next month edition.

CONTRIBUTIONS FROM LONG ISLAND TECHNICAL & ENGINEERING COMPANIES:

Publish your technology-related press release (up to one page) at no cost. Please send the press release as a PDF file attached to email to pulse@ieee.li, addressed to the Editor, with a Subject line "Pulse -PR" followed by your company name, and the responsible contact person's name, email and phone number in the email body.



THE **PULSE**
OF LONG ISLAND

CONTRIBUTE TO THE PULSE – LET YOUR LETTER BE READ and LET YOUR YOUR VOICE BE HEARD

ZEBRA TECHNOLOGIES and DISCOUNT TIRE UNVEIL FIRST TIRE INSPECTION MOBILE COMPUTING SOLUTION

Combination of mobile computer and tread depth reader accessory enables Discount Tire technicians to perform more accurate and efficient tire checks for driver safety

Zebra Technologies Corporation (NASDAQ: ZBRA), an innovator at the front line of business with solutions and partners that deliver a performance edge, today announced that Discount Tire, the world's largest independent retailer of tires and wheels, has deployed the industry's first tire tread depth reading mobile computing solution across its nearly 1,100 stores nationwide. PartnerConnect Premier Independent Software Vendor (ISV) **Anyline** and Premier Solutions Partner Accucode co-developed the solution featuring Zebra's Android™-based **TC75x mobile** computer, a new laser-based tire tread depth reader accessory, and Anyline's Tire DOT Scanner software enabling Discount Tire technicians to more efficiently and safely perform tire checks.

"We pride ourselves on delivering customers the highest quality tire service and products to help keep them safe on the road," said Tom Williams, Chief Experience Officer, Discount Tire. "Our new tire inspection solution is a game-changer for our people and will help further our assurance to our customers that we are taking care of their safety by providing the best possible service and most accurate tire readings."

Discount Tire's new tire inspection solution helps improve worker productivity and increase the efficiency of capturing tire tread depth and Department of Transportation (DOT) information. Previously, technicians manually measured as many as 12 different spots for tread depth and used a pen and paper to record each DOT code. With the new mobile handheld solution, Discount Tire technicians can complete an assessment typically in under five seconds per tire. Technicians simply swipe each tire to check for tread depth and scan the DOT code with the tool's camera in real-time, enabling them to assist more customers, reduce wait times, and provide a more positive customer experience. Discount Tire offers all its customers the option of a touchless experience, where drivers can remain in their vehicles while their tire safety service is performed.

Using the TC75x's large display, **Discount Tire** technicians can also visually show customers the status of their tire tread depth. A color-coded chart clearly indicates the safety levels of the tire tread depth to indicate when new tires are needed. This information and the guidance of Discount Tire's experts can help customers confidently make the safest decisions for their vehicles. The mobile solution also integrates with Discount Tire's technology system to help eliminate other paper-based processes, such as automating the creation of customer profiles.

"Discount Tire is raising the bar with its commitment to customer safety through the use of innovative mobile computing solutions," said Joe White, Senior Vice President and General Manager of Enterprise Mobile Computing, Zebra Technologies. "By using this new solution, Discount Tire is providing a performance edge to its technicians, enabling them to deliver better, faster service with visibility and actionable insights to their customers to help provide the safest driving experience."

Using Anyline's Tire DOT Scan software on the TC75x mobile computer, Discount Tire technicians can instantly capture the DOT tire identification number (TIN) on the sidewall of any tire to determine age and manufacture location. Discount Tire intends to leverage Anyline's scan software to read other aspects of a vehicle, such as vehicle identification number (VIN), license plate and other tire-related information.



"Starting today, the most powerful tool in a Discount Tire technician's toolbox is this smart device," said Lukas Kinigadner, CEO and Co-Founder of Anyline. "With this industry-first solution, Discount Tire is setting a new gold-standard for tire inspections, empowering their workforce to make smarter, data-driven decisions that ensure the highest level of driver safety, and an unrivaled customer experience."

KEY TAKEAWAYS

Zebra, Anyline and Accucode are introducing the industry's first mobile tire tread depth reader and DOT scanning solution, which will be deployed across all of Discount Tire's nearly 1,100 stores. The co-developed solution features Zebra's TC75x mobile computer and new tire tread depth reader accessory that enables Discount Tire technicians to provide customers with quality information to make the safest decisions for their vehicles. Anyline's Tire DOT Scan software can quickly read DOT TIN numbers, expediting communications to customers when they are due for a replacement. Discount Tire's new tire inspection solution is helping improve worker productivity and increase the efficiency of capturing a tire's tread depth and DOT information, enabling them to assist more customers, reduce wait times, and provide a more positive customer experience.

IEEE MEMBERSHIP and MEMBER BENEFITS

IEEE membership offers access to technical innovation, cutting-edge information, networking opportunities, and exclusive member benefits. Members support IEEE's mission to advance technology for humanity and the profession, while memberships build a platform to introduce careers in technology to students around the world.



JOIN IEEE OR RENEW YOUR MEMBERSHIP

Reach your full potential as part of the world's largest technology community. Join professionals, experts, and advisors who can help shape your career, offer resources to acquire new skills, and advance your professional development.



MEMBER BENEFITS

As an IEEE member, you'll be presented with new resources, valuable opportunities, and many discounts that will help you advance your career in the right direction. You can find colleagues who share your vision and commitment—those who are moving technology forward today.



ENHANCE YOUR MEMBERSHIP—JOIN AN IEEE SOCIETY

IEEE Societies provide members with opportunities to connect with experts and network with colleagues locally and abroad—all while staying up-to-date on technology and trends in their industry.



GIFT OF MEMBERSHIP

IEEE membership delivers access to the industry's most essential technical information and provides networking opportunities both locally and globally. Members have the ability to stay current in their chosen profession, connect with peers, and invest in their future.



MEMBER-GET-A-MEMBER

Consider sharing your IEEE membership experience and get rewarded for doing so. Through the Member-Get-a-Member (MGM) program, IEEE rewards your efforts in recruiting new members. Your local IEEE Section can also benefit.



IEEE.tv

Made possible by IEEE members, IEEE.tv is an award-winning, Internet-based television network, producing special-interest programming about technology and engineering for IEEE members and the general public.

Get access with new resources, valuable opportunities, and many discounts that will help you advance your career in the right direction.

WHEN YOU JOIN IEEE, YOU:

- Join a community of over 425,000 technology and engineering professionals united by a common desire to continuously learn, interact, collaborate, and innovate
- Get the resources and opportunities you need to keep on top of changes in technology
- Get involved in standards development
- Network with other professionals in your local area or within a specific technical interest
- Mentor the next generation of engineers and technologists and so much more.

IEEE members can access information on local events and activities by signing in to myIEEE, the members' personalized gateway to IEEE membership. In addition, members can also:

- Access individual Society memberships and subscriptions
- Connect with local IEEE Sections and volunteer leadership
- Find upcoming conferences

Learn more about individual benefits

- Read the latest news from IEEE, IEEE Spectrum, IEEE Standards News, and The Institute

No need to over-engineer this.

Satisfaction will increase with exclusive IEEE member discounts and insurance.

Special, low pricing creates high value for IEEE Members.* Tap into exclusive member discounts on products and services from trusted brands.

*Where available



Leverage your IEEE membership today! Visit ieee.org/discounts and learn how this inverse relationship can be a proven formula.

You've Always Set Yourself Apart. Now it's Time to make it Official. Nominate Yourself to become a...

IEEE SENIOR MEMBER



Being elevated to senior member recognizes people who have moved beyond entry-level work in their careers. It also encourages them to engage more broadly with engineers and other technical professionals in companies and universities outside their own. To be eligible for senior member status, members must have worked in a professional capacity in a technical field for at least 10 years. Educational experience is partially credited toward that time. Nominees must also have professional references from three IEEE senior members, Fellows, or honorary members. If you're interested in elevation, you don't have to wait to be nominated—you can nominate yourself.

>> APPLY FOR SENIOR MEMBER GRADE

IEEE LIFE MEMBERS, WRITE FOR THE PULSE!



The Section is inviting you to record your stories and histories in our monthly publication, the *Long Island Pulse*. An article of approximately 300 – 350 words is recommended.

LET US HEAR FROM YOU.

Send your article to: pulse@ieee.li
Life Member Chair: life@ieee.li

The **IEEE Long Island Section** has held meetings with many of our Life Members and Senior Engineers, in recent months. Your stories and histories in engineering are interesting, inspiring and should be recorded for future generations. You have served your profession for many years, many have served our country in the military, many as engineers fighting the Cold War. The many contributions are the legacy to this new digital age, space age, environmental age and beyond.

WANTED: IEEE LIFE MEMBER NEEDED TO VOLUNTEER TO SUBMIT A MONTHLY HISTORY ARTICLE FOR THE PULSE

The **PULSE** is seeking a IEEE LI Life Member to write the *Long Island Electrical & Electronic History* monthly article for the **Pulse**. If interested contact pulse@ieee.li

WE WANT YOUR STORIES



IEEE CONSULTANTS NETWORK OF LONG ISLAND

THE IEEE CONSULTANTS NETWORK OF LONG ISLAND (LICN)

is a nonprofit professional organization affiliated with the Institute of Electrical and Electronics Engineers. Our members include dozens of electrical, electronic, mechanical and software engineers with expertise in over 65 categories of technology and business. All are members of the IEEE and adhere to the IEEE professional codes of ethics.

MEMBER
IEEE L.I. CONSULTANTS NETWORK



PETER BUITENKANT CONSULTANT

MICROPROCESSOR HARDWARE / SOFTWARE DESIGNS
DIGITAL CIRCUIT DESIGN • TRAINING COURSES

WEBSITE: www.peterbui-consult.com

24 Thorngrove Lane
Dix Hills, NY 11746

VOICE: (631) 491-3414
EMAIL: peterbui@optonline.net

(516) 378-0979

ambertec@ieee.org

Ambertec, P.E.P.C.

John Dunn – MSEE, PE

Member IEEE Consultants Network of Long Island

www.licn.org/Profile/JDunn

181 Marion Avenue

Merrick, NY 11566

Real Time Embedded - Financial Services - Transit
Architecture - Object Oriented Design - Java - C/C++
Full Stack - Internet of Things - Mobile Applications
Unix/Linux - Windows - Compilers - Communications



EARLY ELECTRONICS

Hardware / Software Consulting Services

Chris Early, BSEE, MSCS, PE
154 Hempstead Avenue
Rockville Centre, NY 11570

unixdev@ix.netcom.com
Voice: (516) 764-1067
Fax: (516) 764-1124

SIGNALS IN MOTION

Len Anderson
President



PHONE: 718-279-3953
FAX: 509-471-6496
E-MAIL: LenAnder@SignalsInMotion.com
WEBSITE: www.SignalsInMotion.com

BODNER & O'ROURKE, LLP
PATENTS, TRADEMARKS, COPYRIGHTS
AND RELATED MATTERS

GERALD T. BODNER PATENT ATTORNEY

425 BROADHOLLOW ROAD, SUITE 120
MELVILLE, NY 11747
TEL: (631) 249-7500
FAX: (631) 249-4508
gbodner@bodnerorourke.com

ADVANCE IN TECHNOLOGY, INC.

Electronic Design — Analog, Digital, RF and Systems

JOHN LIGUORI
CEO, MSEE
631-865-2423

82 Westwood Avenue, Deer Park, NY 11729

www.advance-in-technology.com

JLiguori@advance-in-technology.com

Broad Shoulder Consulting LLC

Electronics, Mechanics, Optics, Software
www.broshoco.com

Special Expertise in Medical Imaging
System Design, Prototyping and Production
Serving Start-ups and Technology Investors

Dmitriy Yavid
Founder
631-706-4696
dy@broshoco.com



Broad Shoulder Consulting, LLC
Long Island High Tech Incubator
25 Health Science Drive
Mail Box 320
Stony Brook, NY 11790-3350

Fred Katz Consulting, Inc.

93 Steven Place West Hauppauge, NY 11788

Proposals, Contracts & Specification Development
Innovative Creation, Electro-Mechanical
Analog & Digital Circuit/System Design
Wireless, Motion, Occupancy Sensors
System Analysis/Documentation
Commercial/Military Product Design
Sonar Systems and Acoustic Signal Processing
Security, Marine & Energy Saving, ROHS, UL Testing
Clever Inventions, Algorithm, IP & Patent Development



fred@fredkatzconsulting.com

www.fredkatzconsulting.com

Fred Katz
President

(631) 724-7702

Electronics
Consultant

Memberships: IEEE Senior Life Member, IEEE LI Consultants Network, LI Metal
Workers, Mensa Society, NYS Professional Inventors, Suffolk County Inventors

EXPERT WITNESS

TECHNICAL INVESTIGATOR

MARTIN KANNER AE, EE, MEE

PRODUCT LIABILITY
MACHINE INJURY

FIRE DAMAGE INJURY
LIGHTNING DAMAGE



sixxpoppy@juno.com

(516) 681-4346

POWER – CONTROLS DIV.
42 Glenwood Road
Plainview, NY 11803

EEDEngineering - Quality Software/Testing Solutions

Andrew Franklin Baxt
Managing Director of Engineering

Phone: 516-678-6563
Mobile: 561-558-3499
Oceanside, New York 11572
Andrew.Baxt@EEDEngineering.com
www.EEDEngineering.com

Carl Meshenberg

Technology Consulting Services

Electronic Product Development
Project Management
Marketing Strategies
Contract Development & Oversight

Mobile: 516 383-2595
carl.jmesh@gmail.com

PROGRAMMING PLUS®

2503 AVENUE X
BROOKLYN, NY 11235

HARDWARE & SOFTWARE CONSULTING

- ADMINISTRATION • DATABASES • UNIX
- DEVELOPMENT • NETWORKS • LINUX
- ENGINEERING • INTERNET • VMS
- INTEGRATION • SECURITY • WINDOWS

For expert assistance, contact **Robert Weiner, EE, PE**, at:

Tel: (718) 648-6902 Email: info@progplus.com
Fax: (718) 648-7449 Web: www.progplus.com

IEEE Consultants Network of Long Island

PO Box 411, Malverne NY 11565-0411

www.licn.org

(516) 379-1678

Be sure to visit our web Blog at:
licn.typepad.com/my_weblog



Affiliated with the Institute of Electrical
and Electronics Engineers, Inc.



John F. Vodopia, Esq.

Intellectual Property Law Firm

133C New York Avenue
Huntington, NY 11743

631-673-7555 ext: 5
631-327-6197 (Mobile)
631-425-7030 (Fax)

jvodopia@gmail.com
jvodopia@ieee.org



BAE SYSTEMS



Careers at BAE Systems

Whatever your talents, goals and ambitions, you'll find a distinctive place to thrive at BAE Systems. Join our team and see how you can make a bigger difference.

Greenlawn, NY

>> **SENIOR MANUFACTURING ENGINEER**

Manufacturing &
Maintenance

Job ID: 67626BR

Greenlawn, New NY

>> **ELECTRONIC ASSEMBLER III**

Manufacturing &
Maintenance

Job ID: 68513BR

Greenlawn, NY

>> **INDUSTRIAL DATA ANALYST ENGINEER**

Manufacturing &
Maintenance

Job ID: 67598BR

Greenlawn, NY

>> **RADIO FREQUENCY TECHNICIAN III**

Manufacturing &
Maintenance

Job ID: 66962BR

Greenlawn, NY

>> **SENIOR MANUFACTURING ENGINEER**

Manufacturing &
Maintenance

Job ID: 63935BR

Greenlawn, NY

>> **ENGINEERING TECHNOLOGY INTERN**

Engineering &
Technology

Job ID: 67960BR

Greenlawn, NY

>> **INDUSTRIAL/ CONTINUOUS IMPROVEMENT ENGINEER**

Manufacturing &
Maintenance

Job ID: 67592BR



CONTACT:

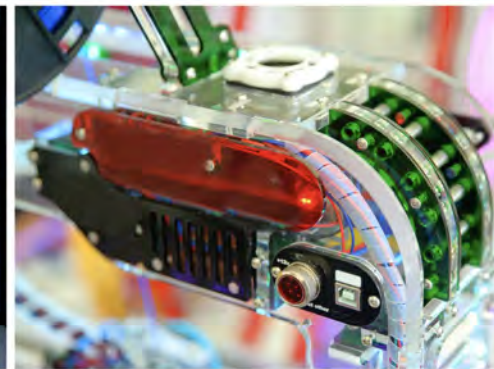
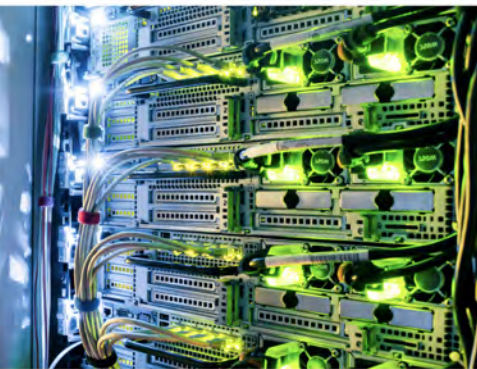
Dave Ericson,
Engineering Manager
david.ericson@baesystems.com

Amy Compagno,
HR Manager
Amy.Compagno@baesystems.com



IEEE

LONG ISLAND SECTION



THE
PULSE
OF LONG ISLAND