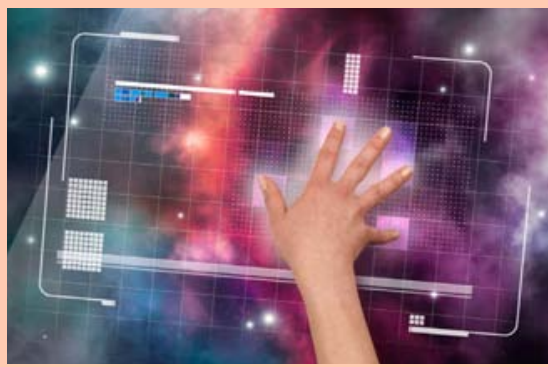




THE PULSE

FEBRUARY 2021 | VOL. 68, NO. 2

OF LONG ISLAND



INSIDE THIS ISSUE

- + IEEE Long Island Section **Employ Me Day** | 5
- + **Write For The *Pulse***– Let Your Voice Be Heard | 6
- + Section News: **Zebra Technologies Wins 2021 IoT Breakthrough Award** | 7
- + **Member Benefits** | 9
- + **Call for Senior and Life Members** | 10
- + **Employment Opportunities** | 12



2020 OUTSTANDING MEMBERSHIP
RETENTION PERFORMANCE
LONG ISLAND SECTION



In honor of the shortest month of the year, I have decided to write the shortest of my ten columns. February still finds us in the grip of a pandemic, but also provides some hopeful signs of recovery. Vaccination of a sufficient number of Americans is progressing, although with many frustrating fits and starts. Many of the conversations on the Long Island Engineers' Club mailing list consist of referrals to vaccination and testing services and their availability. Clearly, our attention is very focused at the moment.

However, the Section is still moving ahead with plans, since I remain optimistic that we will see an easing of pandemic responses as the summer ends. I remain very hopeful that September will usher in a return to normalcy, since the **Section Awards Dinner** is scheduled for later in the month. As I have previously mentioned, the **Power Electronics Symposium** and **Microwave Symposium** are still on the schedule for the fall.

Many virtual events will still occur, among them the yearly Engineer's Week events of February 18th and the **Employ Me Day** virtual job fair in mid-March. Section members have received a registration email for Engineer's Week, and the information on the Employ Me Day events is in this issue.

I hope you had a chance to read the new Details section of the *Pulse*. We are still looking for contributions of a general technical nature that will be of benefit to the members. How-tos and engineering tricks or algorithms that may not be well-known are especially welcome.

As usual, please all practice preventive measures to thwart the transmission of the pandemic. Let us put this once-in-a-century event well behind us.

Stay healthy,

Arnold Stillman
IEEE Long Island Section Chair, 2021

THE PULSE OF LONG ISLAND



The Pulse of Long Island is produced by the Long Island Section of the Institute of Electrical & Electronics Engineers. It is published monthly except during July & August.

Arnold Stillman, Editor
pulse@ieee.li

Anthony Giresi, Graphic Designer
pulse@ieee.li

The opinions expressed in this newsletter are those of the authors, and no endorsement by IEEE, its officials, or its members is implied. IEEE prohibits discrimination, harassment, and bullying. For more information on IEEE policies, please visit www.ieee.org.

IEEE Long Island Section reserves the right to decide whether or not to publish any content in our sole discretion. Any contributed content may be edited before publishing.



INSTITUTE OF ELECTRICAL & ELECTRONICS ENGINEERS

445 Hoes Lane, Piscataway, NJ 08855-1331

Phone (USA & Canada): 1-800-678-4333

Phone (Worldwide): 1-732-981-0060

Website: www.ieee.org

E-mail: contactcenter@ieee.org

IEEE LONG ISLAND SECTION OFFICERS

CHAIR
ARNOLD STILLMAN
chair@ieee.li

FIRST VICE CHAIR
RONALD PIRICH
vc@ieee.li

TREASURER
SANTO MAZZOLA
treasurer@ieee.li

SECRETARY
RHONDA GREEN
secretary@ieee.li

JUNIOR PAST CHAIR
LOU D'ONOFRIO

SENIOR PAST CHAIR
MARJANEH ISSAPOUR

AFFINITY GROUPS and COMMITTEES

EMPLOYMENT ASSISTANCE
CHARLES PLECKAITIS
eac@ieee.li

EDUCATIONAL ACTIVITIES
MARJANEH ISSAPOUR
education@ieee.li

ENTREPRENEUR NETWORK
BILL WILKES SR.

MEMBERSHIP DEVELOPMENT
CARL MESHENBERG
membership@ieee.li

YOUNG PROFESSIONALS
YASH CHOWDHURY
yp@ieee.li

LIFE MEMBERS
DON GRIECO
life@ieee.li

STUDENT DEVELOPMENT ACTIVITIES
GLENN LUCHEN
student@ieee.li

WOMEN IN ENGINEERING (WIE)
MIHAELA RADU
wie@ieee.li

AWARDS COMMITTEE
NIKOLAOS GOLAS
awards@ieee.li

PROFESSIONAL ACTIVITIES
NIKOLAOS GOLAS
pace@ieee.li

LEGAL AFFAIRS
JOHN VODOPIA
legal@ieee.li

www.ieee.li

THE IEEE LONG ISLAND SECTION WEBSITE

The IEEE LI Section website is regularly updated to reflect recent section activity and upcoming events. Each Society and Affinity Group has a dedicated page that describes their function and includes contact information.

www.licn.org



CONSULTANT'S NETWORK OF LONG ISLAND

The Consultant's Network of Long Island maintains a referral service of engineering, computer, managerial and technical professionals.

membership@ieee.li

MEMBERSHIP DEVELOPMENT

For more information on membership with the LI Section of the IEEE, e-mail Carl Meshenberg at: membership@ieee.li

 <p>AEROSPACE & ELECTRONIC SYSTEMS SOCIETY (AES) Chair: Dave Mesecher Vice Chair: Vacant Email: aes@ieee.li</p>	 <p>ANTENNAS AND PROPAGATION SOCIETY (APS) Chair: Bryan Tropper Vice Chair: Sai Padmanabhan Email: ap@ieee.li</p>	 <p>CIRCUITS AND SYSTEMS SOCIETY (CAS) Chair: James Colotti Vice Chair: Supriya Karmakar Email: cas@ieee.li</p>	 <p>COMMUNICATIONS SOCIETY (COMSOC) Chair: Howard Hausman Vice Chair: Tony Bowden Email: communications@ieee.li</p>
 <p>COMPUTER SOCIETY (CS) Chair: Barbara Porter Vice Chair: Brian Quinn Email: computer@ieee.li</p>	 <p>ELECTROMAGNETIC COMPATIBILITY SOCIETY (EMCS) Chair: James Colotti Vice Chair: Vacant Email: emc@ieee.li</p>	 <p>ENGINEERING IN MEDICINE & BIOLOGY SOCIETY (EMBS) Chair: John Vodopia Vice Chair: Vacant Email: emb@ieee.li</p>	 <p>INSTRUMENTATION AND MEASUREMENT SOCIETY (IMS) Chair: Joe Jordan Vice Chair: Ephraim Adeola Email: im@ieee.li</p>
 <p>MICROWAVE THEORY AND TECHNIQUES SOCIETY (MTT) Chair: Saikumar Padmanabhan Vice Chair: Eric Darvin Email: mtt@ieee.li</p>	 <p>NUCLEAR AND PLASMA SCIENCES SOCIETY (NPS) Chair: Shaorui Li Vice Chair: Graham Smith Email: nps@ieee.li</p>	 <p>PHOTONICS SOCIETY (IPS) Chair: Adam A. Filos Vice Chair: M. Nazrul Islam Email: photonics@ieee.li</p>	 <p>POWER & ENERGY/INDUSTRY APPLICATIONS SOCIETY (PES & IAS) Chair: Marjaneh Issapour Vice Chair: Lou D'Onofrio Email: power@ieee.li</p>
 <p>POWER ELECTRONICS SOCIETY (PELS) Chair: Ronald DeLuca Vice Chair: Predrag Hadzibabic Email: pels@ieee.li</p>	 <p>PRODUCT SAFETY ENGINEERING SOCIETY (PSES) Chair: Tom Lanzisero Vice Chair: Vacant Email: safety@ieee.li</p>	 <p>SIGNAL PROCESSING SOCIETY (SPS) Chair: Jessica Donaldson Vice Chair: Dave Mesecher Email: signal@ieee.li</p>	 <p>SOCIAL IMPLICATIONS OF TECHNOLOGY SOCIETY (SSIT) Chair: Howard Edelman Vice Chair: John Vodopia Email: social@ieee.li</p>
<p>The Long Island Section of IEEE has 18 Chapters. Each Chapter is a technical subunit of the Long Island Section, associated with an IEEE Society. The Chapters, as well as the Section, are always welcoming volunteers. If you would like to help with any of the Long Island Chapter's steering groups, please do contact the relevant Chapter Chair, Vice Chair, or one of the Section officers.</p>		 <p>SYSTEMS COUNCIL (SYSC) Chair: Stephanie White Vice Chair: Vacant Email: systems@ieee.li</p>	 <p>TECHNOLOGY & ENGINEERING MANAGEMENT SOCIETY (TEMS) Chair: Brian Quinn Vice Chair: Barbara Porter Email: tmc@ieee.li</p>



employ ME Day

TOTALLY ONLINE

3:00 - 5:00 pm
FRIDAY, MARCH 12, 2021

2:00 - 5:00 pm
FRIDAY, MARCH 19, 2021

FREE TO ALL

RESUME and ABOUT ME SPEECH CHECKUPS

SUBMISSIONS:
Jan 25 – Mar 17, 2021

RESUME CHECKUP

Upload your Resumes in .pdf format to be critiqued by a Professional Specialist

ALL YOU NEED IS:

1. Your .pdf Resume
2. Your Name
3. Your Phone Number
4. Your email address

A secondary form, which is required, will be sent to you.

E-MAIL TO:
lmc2020.ieee@gmail.com
Subject: **RESUME CHECK**

ABOUT ME SPEECH CHECKUP

2 Minute Elevator Speeches, ~200 words. Upload your About Me Speeches in .pdf format to be critiqued by Consulting Specialists

ALL YOU NEED IS:

1. Your .pdf About Me Speech ~200-word
2. Your email address

E-MAIL TO:
lmc2020.ieee@gmail.com
Subject: **ABOUT ME CHECK**

FRIDAY, MARCH 12

3:00 PM - 4:00 PM WINNING RESUME WEBINAR

Find out about winning resume tips by a Professional

PRE-REGISTER:
c.pleckaitis@ieee.org

4:00 PM - 5:00 PM INTERVIEW TIPS & TECHNIQUES WEBINAR

Learn winning interview tips, techniques, and strategies by a Professional Career Consultant

PRE-REGISTER:
c.pleckaitis@ieee.org

FRIDAY, MARCH 19

2:00 PM - 2:20 PM ABOUT ME WEBINAR (20 Minutes)

Learn Winning Tips & Techniques for a Better About Me Speech

PRE-REGISTER:
c.pleckaitis@ieee.org

2:20 PM - 3:00 PM ABOUT ME WORKSHOP

- Present your **ABOUT ME** Speech **LIVE** to Consulting Specialists
- Held in Individual Online Meeting Rooms
- In 6 minutes, Limited Sessions (2 min speech; 4 min Q&A)

PRE-REGISTER:
c.pleckaitis@ieee.org

MARCH 19, 2021, 2 - 5 PM IEEE SPONSORED BREAKOUT SESSIONS

For up-to-date information on date/other changes, look in next month's *Pulse* or visit the EAC Website:

ieeeli.committees/employment-assistance-committee. If interested in participating in the Job Fair, which is **FREE** and totally **ONLINE** to all companies, please respond to the contact information below. Many capable technical candidates on Long Island are available for employment and are waiting to be reached.

CONTACT: Charles Pleckaitis
E-MAIL: c.pleckaitis@ieee.org

WEBINAR PRE-REGISTRATION:

Send the following information:

1. Your Name
2. Which Webinar wish to attend:
 - WINNING RESUME
 - ABOUT ME
 - INTERVIEW TIPS

E-MAIL: C.pleckaitis@ieee.org
Subject: **WEBINAR SIGN UP**

WEBSITE: ieeeli.committees/employment-assistance-committee

WORKSHOP INFORMATION:

ieeeli.committees/employment-assistance-committee
ieeeli.committees/employment-assistance-committee

ATTENTION LI COMPANIES

The Employment Assistance Committee (EAC) wishes to coordinate with representatives of LI companies for a free Online IEEE sponsored Job Fair. Internships are welcomed. Present Job needs & interview via Side sessions with Zoom.

For information about EAC, the IEEE EAC Website visit: <https://ieeeli.committees/employment-assistance-committee>

LET YOUR VOICE BE HEARD

WRITE TO THE PULSE

The Pulse of Long Island is a newsletter for the members of the IEEE Long Island Section. You can let your voice heard by writing to the Editor. How to bring more value to our members? Interesting new technology, or a project? An issue of interest to members of the IEEE Long Island, Long Island engineers and computer professionals, or Long Island technical community at large? Write to the *Pulse*. Let your letter be read, and your voice heard.

HOW CAN I CONTRIBUTE TO THE PULSE?

Send your letters or articles via email to pulse@ieee.li. If selected for publication, the letter or article will be edited before being published.



ADVERTISERS:

Please contact us at pulse@ieee.li for advertising rates.



CONTRIBUTION DEADLINE:

20th of a month for the next month edition.

CONTRIBUTIONS FROM LONG ISLAND TECHNICAL & ENGINEERING COMPANIES:

Publish your technology-related press release (up to one page) at no cost. Please send the press release as a PDF file attached to email to pulse@ieee.li, addressed to the Editor, with a Subject line "Pulse -PR" followed by your company name, and the responsible contact person's name, email and phone number in the email body.



THE PULSE OF LONG ISLAND

CONTRIBUTE TO THE PULSE - LET YOUR LETTER BE READ and LET YOUR YOUR VOICE BE HEARD



Zebra Technologies Wins IoT Innovation Award for Enterprise Solution of the Year



Zebra's MotionWorks® Proximity Solution
Recognized with 2021 Breakthrough Award*

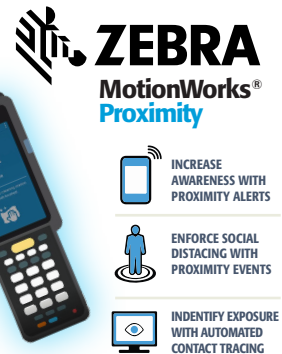
IoT Breakthrough, a leading market intelligence organization that recognizes the top companies, technologies and products in the global Internet-of-Things (IoT) market today, announced that Zebra Technologies Corporation (NASDAQ: ZBRA), has been selected as the winner of the "IoT Innovation Award for Enterprise Solution of the Year." Zebra Technologies, an innovator at the front line of business with solutions and partners that deliver a performance edge, was recognized in the 5th annual IoT Breakthrough Awards program for its **Zebra MotionWorks Proximity** solution.

"ZEBRA MOTIONWORKS PROXIMITY STOOD OUT AMONG THIS YEAR'S NOMINEES BY PUTTING INNOVATION AT THE FOREFRONT IN ADDRESSING ONE OF THE MOST PRESSING CONCERNS ORGANIZATIONS HAVE RIGHT NOW - HOW TO SEND THEIR EMPLOYEES BACK TO WORK SAFELY... ZEBRA TECHNOLOGIES IS EMPOWERING BUSINESSES TO IMPLEMENT A COMPREHENSIVE SAFETY SOLUTION BASED ON BEST PRACTICES THAT MATCH THEIR ENVIRONMENTS & WORKFLOWS. WE EXTEND OUR SINCERE CONGRATULATIONS TO THE ENTIRE ZEBRA TEAM FOR THIS WELL-DESERVED HONOR."

JAMES JOHNSON,
MANAGING DIRECTOR, IOT BREAKTHROUGH

MotionWorks Proximity creates safer, healthier work environments, empowering businesses to more easily manage contact tracing and identify possibly exposed employees to help limit the spread of contagions. The solution alerts and proactively reminds employees to maintain social distancing, while also creating a record of proximity events for reporting purposes. Additionally, the solution's dashboard helps organizations identify patterns where social distancing is not being maintained to ensure a safe working environment for all.

Leveraging customers' existing Bluetooth® Low-Energy (BLE)-enabled Zebra mobile devices & WiFi® infrastructure, MotionWorks Proximity is hosted in the cloud, making it easy for businesses to deploy the solution quickly. In most cases, this deployment only takes a few days.



Zebra MotionWorks Proximity goes beyond providing associates with just an alert; it also helps businesses determine when a particular job or work area needs to be redesigned to ensure proper social distancing. Proximity events gathered from employee devices and uploaded to the cloud provide operational visibility that can be used to fix workflow, workplace design or employee behavior issues.

"As the world adjusts to the increased safety requirements, businesses need a proven and trusted solutions leader to help keep employees healthy and support compliance with changing regulations," said Bill Burns, Chief Product and Solutions Officer, Zebra Technologies. "We are proud of the momentum and response we've seen to our MotionWorks Proximity solution and humbled to be recognized by IoT Breakthrough as Enterprise Solution of the Year."

The mission of the IoT Breakthrough Awards program is to recognize the innovators, leaders and visionaries from around the globe in a range of IoT categories, including Industrial and Enterprise IoT, Smart City technology, Connected Home and Home Automation, Connected Car, and many more. This year's program attracted more than 3,850 nominations from companies all over the world.

*SOURCE: **Zebra Technologies** Press Release, January 11, 2021

FOR MORE INFORMATION VISIT:

<https://www.zebra.com/us/en/products/software/motionworks-proximity.html>
<https://www.zebra.com/motionworks-proximity-fact-sheet-en-us.pdf>

ABOUT IOT BREAKTHROUGH

Part of the Tech Breakthrough, a leading market intelligence and recognition platform for global technology innovation and leadership, the IoT Breakthrough Awards program is devoted to honoring excellence in Internet-of-Things technologies, services, companies and products. The IoT Breakthrough Awards program provides a forum for public recognition around the achievements of IoT companies and products in categories including Connected Home and Home Automation, Connected Car, Industrial IoT (IIoT) and Smart City, Consumer IoT and more. For more information visit IoTBreakthrough.com.



POWER ELECTRONICS SYMPOSIUM 2021

The IEEE LI Power Electronics Symposium that was scheduled for November 2020 was cancelled due to the Coronavirus pandemic.

However, mark your calendars – our next Symposium is scheduled for **November 4, 2021**.

LOOKING FOR AN UPDATE ON SECTION EVENTS?

FOR UPDATES ON ALL LONG ISLAND SECTION EVENTS, CHECK OUT THE IEEE LONG ISLAND SECTION WEBSITE: www.ieee.li



IEEE computer society

SHARE YOUR EXPERIENCE PRESENT YOUR WORK TO THE IEEE

**Working on an interesting project? Or have an interesting topic to talk about?
A startup ready to spread a word, or in need of beta testers with computer knowledge?**

Computer Society Chapter invites you to present your project or your experience. For one of the upcoming meetings, we'd like to mash technical and social, and have several presenters presenting interesting computer-related topics in a shorter timeframe, fostering conversation. This is an opportunity to meet each other, learn about our work and possibly identify opportunities for collaboration.

Contact IEEE Computer Society Chapter at computer@ieee.li with your suggested topic.

IEEE MEMBERSHIP and MEMBER BENEFITS

IEEE membership offers access to technical innovation, cutting-edge information, networking opportunities, and exclusive member benefits. Members support IEEE's mission to advance technology for humanity and the profession, while memberships build a platform to introduce careers in technology to students around the world.



JOIN IEEE OR RENEW YOUR MEMBERSHIP

Reach your full potential as part of the world's largest technology community. Join professionals, experts, and advisors who can help shape your career, offer resources to acquire new skills, and advance your professional development.



MEMBER BENEFITS

As an IEEE member, you'll be presented with new resources, valuable opportunities, and many discounts that will help you advance your career in the right direction. You can find colleagues who share your vision and commitment—those who are moving technology forward today.



ENHANCE YOUR MEMBERSHIP—JOIN AN IEEE SOCIETY

IEEE Societies provide members with opportunities to connect with experts and network with colleagues locally and abroad—all while staying up-to-date on technology and trends in their industry.



GIFT OF MEMBERSHIP

IEEE membership delivers access to the industry's most essential technical information and provides networking opportunities both locally and globally. Members have the ability to stay current in their chosen profession, connect with peers, and invest in their future.



MEMBER-GET-A-MEMBER

Consider sharing your IEEE membership experience and get rewarded for doing so. Through the Member-Get-a-Member (MGM) program, IEEE rewards your efforts in recruiting new members. Your local IEEE Section can also benefit.



IEEE.tv

Made possible by IEEE members, IEEE.tv is an award-winning, Internet-based television network, producing special-interest programming about technology and engineering for IEEE members and the general public.

There is no better time to discover all that IEEE membership has to offer. Join now and your membership is through 2020.

WHEN YOU JOIN IEEE, YOU:

- Join a community of over 425,000 technology and engineering professionals united by a common desire to continuously learn, interact, collaborate, and innovate
- Get the resources and opportunities you need to keep on top of changes in technology
- Get involved in standards development
- Network with other professionals in your local area or within a specific technical interest
- Mentor the next generation of engineers and technologists and so much more.

IEEE members can access information on local events and activities by signing in to myIEEE, the members' personalized gateway to IEEE membership. In addition, members can also:

- Access individual Society memberships and subscriptions
 - Connect with local IEEE Sections and volunteer leadership
 - Find upcoming conferences
- Learn more about individual benefits
- Read the latest news from IEEE, IEEE Spectrum, IEEE Standards News, and The Institute

No need to over-engineer this.

Satisfaction will increase with exclusive IEEE member discounts and insurance.

Special, low pricing creates high value for IEEE Members.* Tap into exclusive member discounts on products and services from trusted brands.

*Where available

Price \searrow Value

Leverage your IEEE membership today!
Visit iee.org/discounts and learn how this inverse relationship can be a proven formula.

You've Always Set Yourself Apart. Now it's Time to make it Official. Nominate Yourself to become a...

IEEE SENIOR MEMBER



Being elevated to senior member recognizes people who have moved beyond entry-level work in their careers. It also encourages them to engage more broadly with engineers and other technical professionals in companies and universities outside their own. To be eligible for senior member status, members must have worked in a professional capacity in a technical field for at least 10 years. Educational experience is partially credited toward that time. Nominees must also have professional references from three IEEE senior members, Fellows, or honorary members. If you're interested in elevation, you don't have to wait to be nominated—you can nominate yourself.

>> APPLY FOR SENIOR MEMBER GRADE

IEEE LIFE MEMBERS, WRITE FOR THE PULSE!



The Section is inviting you to record your stories and histories in our monthly publication, the *Long Island Pulse*. An article of approximately 300 – 350 words is recommended.

LET US HEAR FROM YOU.

Send your article to: pulse@ieee.li
Life Member Chair: life@ieee.li

The **IEEE Long Island Section** has held meetings with many of our Life Members and Senior Engineers, in recent months. Your stories and histories in engineering are interesting, inspiring and should be recorded for future generations. You have served your profession for many years, many have served our country in the military, many as engineers fighting the Cold War. The many contributions are the legacy to this new digital age, space age, environmental age and beyond.

WANTED: IEEE LIFE MEMBER NEEDED TO VOLUNTEER TO SUBMIT A MONTHLY HISTORY ARTICLE FOR THE PULSE

The **PULSE** is seeking a IEEE LI Life Member to write the *Long Island Electrical & Electronic History* monthly article for the *Pulse*. If interested contact pulse@ieee.li

WE WANT YOUR STORIES



**IEEE
CONSULTANTS
NETWORK OF
LONG ISLAND**

THE IEEE CONSULTANTS NETWORK OF LONG ISLAND (LICN)

is a nonprofit professional organization affiliated with the Institute of Electrical and Electronics Engineers. Our members include dozens of electrical, electronic, mechanical and software engineers with expertise in over 65 categories of technology and business. All are members of the IEEE and adhere to the IEEE professional codes of ethics.

MEMBER
IEEE L.I. CONSULTANTS NETWORK



**PETER BUITENKANT
CONSULTANT**

MICROPROCESSOR HARDWARE / SOFTWARE DESIGNS
DIGITAL CIRCUIT DESIGN • TRAINING COURSES

WEBSITE: www.peterbui-consult.com

24 Thorngrove Lane
Dix Hills, NY 11746

VOICE: (631) 491-3414
EMAIL: peterbui@optonline.net

(516) 378-0979

ambertec@ieee.org

Ambertec, P.E.P.C.

John Dunn – MSEE, PE

Member IEEE Consultants Network of Long Island
www.licn.org/Profile/JDunn

181 Marion Avenue

Merrick, NY 11566

Real Time Embedded - Financial Services - Transit
Architecture - Object Oriented Design - Java - C/C++
Full Stack - Internet of Things - Mobile Applications
Unix/Linux - Windows - Compilers - Communications



EARLY ELECTRONICS

Hardware / Software Consulting Services

Chris Early, BSEE, MSCS, PE
154 Hempstead Avenue
Rockville Centre, NY 11570

unixdev@ix.netcom.com
Voice: (516) 764-1067
Fax: (516) 764-1124

SIGNALS IN MOTION

Len Anderson
President



PHONE: 718-279-3953
FAX: 509-471-6496
E-MAIL: LenAnder@SignalsInMotion.com
WEBSITE: www.SignalsInMotion.com

BODNER & O'ROURKE, LLP
PATENTS, TRADEMARKS, COPYRIGHTS
AND RELATED MATTERS

GERALD T. BODNER
PATENT ATTORNEY

425 BROADHOLLOW ROAD, SUITE 120
MELVILLE, NY 11747
TEL: (631) 249-7500
FAX: (631) 249-4508
gbodner@bodnerorourke.com

ADVANCE IN TECHNOLOGY, INC.
Electronic Design — Analog, Digital, RF and Systems

JOHN LIGUORI
CEO, MSEE
631-865-2423

82 Westwood Avenue, Deer Park, NY 11729
www.advance-in-technology.com
JLiguori@advance-in-technology.com

Broad Shoulder Consulting LLC

Electronics, Mechanics, Optics, Software
www.broshoco.com

Special Expertise in Medical Imaging
System Design, Prototyping and Production
Serving Start-ups and Technology Investors

Dmitry Yavid
Founder
631-706-4696
dy@broshoco.com



Broad Shoulder Consulting, LLC
Long Island High Tech Incubator
25 Health Science Drive
Mail Box 320
Stony Brook, NY 11790-3350

Fred Katz Consulting, Inc.

93 Steven Place West Hauppauge, NY 11788

Proposals, Contracts & Specification Development
Innovative Creation, Electro-Mechanical
Analog & Digital Circuit/System Design
Wireless, Motion, Occupancy Sensors
System Analysis/Documentation
Commercial/Military Product Design
Sonar Systems and Acoustic Signal Processing
Security, Marine & Energy Saving, ROHS, UL Testing
Clever Inventions, Algorithm, IP & Patent Development



fred@fredkatzconsulting.com

www.fredkatzconsulting.com

Fred Katz
President

(631) 724-7702

Electronics
Consultant

Memberships: IEEE Senior Life Member, IEEE LI Consultants Network, LI Metal
Workers, Mensa Society, NYS Professional Inventors, Suffolk County Inventors

EXPERT WITNESS

TECHNICAL INVESTIGATOR

MARTIN KANNER AE, EE, MEE

PRODUCT LIABILITY
MACHINE INJURY

FIRE DAMAGE INJURY
LIGHTNING DAMAGE



sixxpoppy@juno.com

(516) 681-4346

POWER – CONTROLS DIV.
42 Glenwood Road
Plainview, NY 11803

EEDEngineering - Quality Software/Testing Solutions

Andrew Franklin Baxt
Managing Director of Engineering

Phone: 516-678-6563
Mobile: 561-558-3499
Oceanside, New York 11572
Andrew.Baxt@EEDEngineering.com
www.EEDEngineering.com

Carl Meshenberg

Technology Consulting Services

Electronic Product Development
Project Management
Marketing Strategies
Contract Development & Oversight

Mobile: 516 383-2595
carl.jmesh@gmail.com

**PROGRAMMING
PLUS®**

2503 AVENUE X
BROOKLYN, NY 11235

HARDWARE & SOFTWARE CONSULTING

- ADMINISTRATION
- DATABASES
- UNIX
- DEVELOPMENT
- NETWORKS
- LINUX
- ENGINEERING
- INTERNET
- VMS
- INTEGRATION
- SECURITY
- WINDOWS

For expert assistance, contact **Robert Weiner, EE, PE**, at:
Tel: (718) 648-6902 Email: info@progplus.com
Fax: (718) 648-7449 Web: www.progplus.com

**IEEE Consultants
Network of Long Island**

PO Box 411, Malverne NY 11565-0411

www.licn.org

(516) 379-1678

Be sure to visit our web Blog at:
licn.typepad.com/my_weblog



Affiliated with the Institute of Electrical
and Electronics Engineers, Inc.



John F. Vodopia, Esq.

Intellectual Property Law Firm

133C New York Avenue
Huntington, NY 11743

631-673-7555 ext: 5
631-327-6197 (Mobile)
631-425-7030 (Fax)

jvodopia@gmail.com
jvodopia@ieee.org

Farmingdale State College

State University of New York



FARMINGDALE STATE COLLEGE SECURITY SYSTEMS AND LAW ENFORCEMENT TECHNOLOGY

ASSISTANT PROFESSOR (2 Postions)

JOB DESCRIPTION:

The Department of Security Systems and Law Enforcement Technology at Farmingdale State College (SUNY) invites applications for two tenure-track positions at the rank of Assistant Professor beginning in the Fall of 2020. The successful candidate will teach a variety of undergraduate courses in Computer Security and Software Technology, including information security, cryptography, cyber security, computer forensics, database security, physical security, artificial intelligence, software development, and machine learning. Other responsibilities include student advisement and curriculum development. Candidates must engage in grant development work and research leading to publications in refereed academic journals. All faculty members at Farmingdale State College have three workload components: teaching, research and scholarly activity, and service. The successful candidate will demonstrate an interest and high level of competence in teaching. Candidates should have a research agenda that complements their area of academic specialty resulting in peer-reviewed publications and presentation, both of which are necessary for promotion and tenure at Farmingdale State College. The service component of the workload includes student advisement as well as active participation on departmental, school and college-wide committees. The faculty member may be expected to teach in multiple formats including hybrid, online and traditional face-to-face classes. The college particularly welcomes candidates with knowledge, skills and abilities that include: Commitment to diversity and university initiatives supportive of diversity and inclusion. Interest in participating in student-centered service activities. Desire to apply expertise in promoting civic engagement with the College's many community partners.

REQUIRED QUALIFICATIONS:

An earned doctorate in Computer Science, Computer Security, Cybersecurity, Computer Engineering, or a closely related field. Highly qualified ABD's may be considered if completion of the Ph.D. will occur by the Spring 2021 semester. A proven-track of records programming with C, C++, Java, Python, and/or other programming languages beyond school level, and familiarity with Windows, Linux and Mac OS. The candidate must be a permanent resident or a US citizen because Farmingdale State College does not offer any kind of visa sponsorship.

PREFERRED QUALIFICATIONS:

The candidate should have earned a Bachelor's degree in Computer Security, Computer Science, Computer Engineering, or a closely related field. He/she should possess expertise or interest in the areas of Computer security, cyber security, homeland security, physical security, artificial intelligence and/or machine learning. Applicant should possess excellent communication, interpersonal skills and have previous college level teaching experience. Evidence of prior teaching experience, scholarly publications and any industry experience is preferred.

ADDITIONAL INFORMATION:

This is a full-time, 10 month faculty position. For the first 10 working days, beginning Friday, October 25, 2019 and ending Thursday November 7, 2019, applications will be limited to UUP Farmingdale. CLOSING DATE FOR RECEIPT OF APPLICATIONS: Sunday, December 8, 2019. Salary: \$70,000/year, may increase commensurate with experience. ANTICIPATED START DATE: Tuesday, September 1, 2020. SUNY offers excellent fringe benefits including health insurance options and retirement plans. VISA SPONSORSHIP IS NOT AVAILABLE FOR THIS POSITION.

APPLICATION INSTRUCTIONS:

To apply, submit a letter of application (that includes a statement on teaching philosophy and methodology), c.v., copies of teaching evaluations, unofficial copy of graduate transcripts (showing highest degree awarded/or currently in process), names and contact information of three references. Only applications made through Farmingdale's electronic application system will be accepted. Candidates invited for interviews will be asked to make a presentation on their research/creative activities as well as a separate teaching demonstration.

TO APPLY GO TO:

www.farmingdale.edu/employment

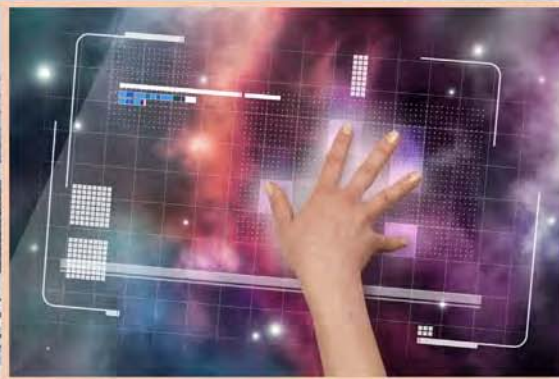
Farmingdale State College
STATE UNIVERSITY OF NEW YORK



IEEE



LONG ISLAND SECTION



THE **PULSE**
OF LONG ISLAND