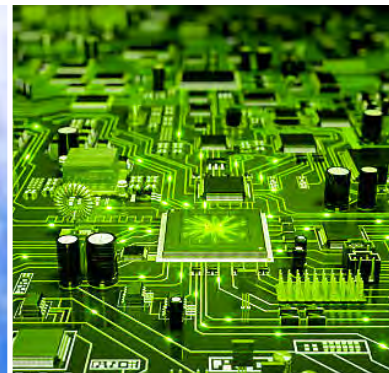




THE PULSE

SEPTEMBER 2020 | VOL. 67, NO. 7

OF LONG ISLAND



INSIDE THIS ISSUE

- ❖ **Write For The *Pulse*– Let Your Voice Be Heard** | 5
- ❖ **FEATURE ARTICLE: IEEE ADOPTS NEW DIVERSITY STATEMENT** | 6
- ❖ **Call for LI Student Technical Interns** | 7
- ❖ **Member Benefits** | 8
- ❖ **Call for Senior and Life Members** | 9
- ❖ **Employment Opportunities** | 11

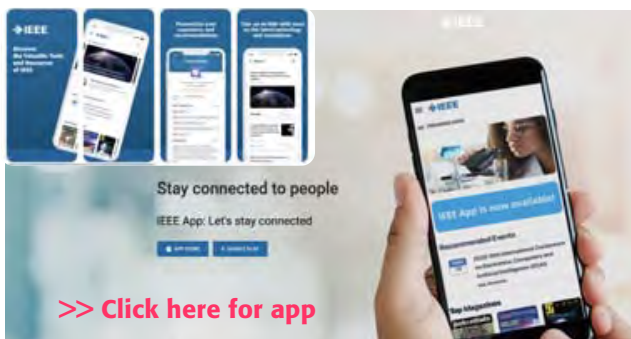


Welcome back, everyone, from the summer we will not soon forget. Many of us know of people who have been severely affected by the Covid-19 outbreak, so let us hope that the policies in place to mitigate any future recurrences are working. Please be mindful that continued observance of common sense practices will allow for the eventual elimination of a viable virus.

Even though we will be practicing social distancing for the foreseeable future, that does not mean that we will not be hosting events. Although the Awards Banquet will not be held this year, a **combined 2019/2020 Awards Banquet** will occur on **March 24th, 2021**. We will combine two year's presentations into one as we are hope to celebrate the return of public gatherings. However, several online meetings are in the planning stages. Let me go through them. Also check out our feature article on page 6, **IEEE Adopts New Diversity Statement**.

On September 17, the Engineers Joint Committee of Long Island is holding a live ethics webinar given by Marc S. Krieg. Mr. Krieg is an attorney at Krieg Associates, PC and the title of his talk is "*Avoidance of Legal & Ethical Professional Practice Pitfalls*". You should already have gotten an email advertising the event, but it is at 6:30 pm and provides 2 PDH. There is a fee of \$20 per attendee and restrictions are in place to award credit properly. **Go here to register for the webinar**. The always popular Social Security and Retirement planning webinar by Robert Leitner is tentatively scheduled for October 8 at 1 PM. This will be in webinar form and time for questions will be allotted.

A first ever event is free **1010 DAY A "BIT" OF TOMORROW TODAY**. The impetus for the naming of this event is the date 10/10/2020 and the numerologic identity of the binary 1010 being equal to the decimal 10. This will be a free online conference featuring influential speakers and panel discussions covering topics in artificial intelligence and cybersecurity. There will be a particular focus on ethical and societal implications of computing and AI and there will be an opportunity for questions. Notices and web links for these events will go out as their details become final. October 10, 2020 IEEE celebrates **IEEE Day**, see page 6 for web link.



Lastly, I want to point out that the **IEEE has a very useful app** available that can keep your calendar updated with news and events. It provides access to several magazine subscriptions of your societies and suggests members with similar demographics. It is available for both Android and iOS devices. Everyone please stay healthy and let us hope for a speedy end to these unusual times.

Regards,

Arnold Stillman
IEEE Long Island Section Chair, 2020

THE PULSE OF LONG ISLAND



The Pulse of Long Island is produced by the Long Island Section of the **Institute of Electrical & Electronics Engineers**. It is published monthly except during July & August.

IEEE LI Section, Editor
pulse@ieee.li

Anthony Giresi, Graphic Designer
pulse@ieee.li

The opinions expressed in this newsletter are those of the authors, and no endorsement by IEEE, its officials, or its members is implied. IEEE prohibits discrimination, harassment, and bullying. For more information on IEEE policies, please visit www.ieee.org.

IEEE Long Island Section reserves the right to decide whether or not to publish any content in our sole discretion. Any contributed content may be edited before publishing.



INSTITUTE OF ELECTRICAL & ELECTRONICS ENGINEERS

445 Hoes Lane, Piscataway, NJ 08855-1331

Phone (USA & Canada): 1-800-678-4333

Phone (Worldwide): 1-732-981-0060

Website: www.ieee.org

E-mail: contactcenter@ieee.org

IEEE LONG ISLAND SECTION OFFICERS

CHAIR
ARNOLD STILLMAN
chair@ieee.li

FIRST VICE CHAIR
RONALD PIRICH
vc@ieee.li

TREASURER
SANTO MAZZOLA
treasurer@ieee.li

SECRETARY
RHONDA GREEN
secretary@ieee.li

JUNIOR PAST CHAIR
LOU D'ONOFRIO

SENIOR PAST CHAIR
MARJANEH ISSAPOUR

AFFINITY GROUPS and COMMITTEES

**EMPLOYMENT
ASSISTANCE**
CHARLES PLECKAITIS
eac@ieee.li

**EDUCATIONAL
ACTIVITIES**
MARJANEH ISSAPOUR
education@ieee.li

**ENTREPRENEUR
NETWORK**
BILL WILKES SR.

**MEMBERSHIP
DEVELOPMENT**
CARL MESHENBERG
membership@ieee.li

YOUNG PROFESSIONALS
YASH CHOWDHURY
yp@ieee.li

LIFE MEMBERS
DON GRIECO
life@ieee.li

**STUDENT
DEVELOPMENT
ACTIVITIES**
GLENN LUCHEN
student@ieee.li

**WOMEN IN
ENGINEERING (WIE)**
MIHAELA RADU
wie@ieee.li

**AWARDS
COMMITTEE**
NIKOLAOS GOLAS
awards@ieee.li

**PROFESSIONAL
ACTIVITIES**
NIKOLAOS GOLAS
pace@ieee.li

LEGAL AFFAIRS
JOHN VODOPIA
legal@ieee.li

www.ieee.li

THE IEEE LONG ISLAND SECTION WEBSITE

The IEEE LI Section website is regularly updated to reflect recent section activity and upcoming events. Each Society and Affinity Group has a dedicated page that describes their function and includes contact information.

www.licn.org

CONSULTANT'S NETWORK OF LONG ISLAND

The Consultant's Network of Long Island maintains a referral service of engineering, computer, managerial and technical professionals.

membership@ieee.li

MEMBERSHIP DEVELOPMENT

For more information on membership with the LI Section of the IEEE, e-mail Carl Meshenberg at: membership@ieee.li

IEEE LI SECTION SOCIETIES and CHAPTER OFFICERS



AEROSPACE & ELECTRONIC SYSTEMS SOCIETY (AES)

Chair: **Dave Mesecher**
Vice Chair: **Vacant**
Email: aes@ieee.li



ANTENNAS AND PROPAGATION SOCIETY (APS)

Chair: **Bryan Tropper**
Vice Chair: **Sai Padmanabhan**
Email: ap@ieee.li



CIRCUITS AND SYSTEMS SOCIETY (CAS)

Chair: **James Colotti**
Vice Chair: **Supriya Karmakar**
Email: cas@ieee.li



COMMUNICATIONS SOCIETY (COMSOC)

Chair: **Howard Hausman**
Vice Chair: **Tony Bowden**
Email: communications@ieee.li



COMPUTER SOCIETY (CS)

Chair: **Barbara Porter**
Vice Chair: **Brian Quinn**
Email: computer@ieee.li



ELECTROMAGNETIC COMPATIBILITY SOCIETY (EMCS)

Chair: **James Colotti**
Vice Chair: **Vacant**
Email: emc@ieee.li



ENGINEERING IN MEDICINE & BIOLOGY SOCIETY (EMBS)

Chair: **John Vodopia**
Vice Chair: **Vacant**
Email: emb@ieee.li



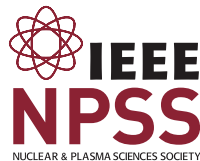
INSTRUMENTATION AND MEASUREMENT SOCIETY (IMS)

Chair: **Joe Jordan**
Vice Chair: **Ephraim Adeola**
Email: im@ieee.li



MICROWAVE THEORY AND TECHNIQUES SOCIETY (MTT)

Chair: **Saikumar Padmanabhan**
Vice Chair: **Eric Darvin**
Email: mtt@ieee.li



NUCLEAR AND PLASMA SCIENCES SOCIETY (NPS)

Chair: **Shaorui Li**
Vice Chair: **Graham Smith**
Email: nps@ieee.li



PHOTONICS SOCIETY (IPS)

Chair: **Adam A. Filos**
Vice Chair: **M. Nazrul Islam**
Email: photonics@ieee.li



POWER & ENERGY/INDUSTRY APPLICATIONS SOCIETY (PES & IAS)

Chair: **Marjaneh Issapour**
Vice Chair: **Lou D'Onofrio**
Email: power@ieee.li



POWER ELECTRONICS SOCIETY (PELS)

Chair: **Ronald DeLuca**
Vice Chair: **Predrag Hadzibabic**
Email: pels@ieee.li



PRODUCT SAFETY ENGINEERING SOCIETY (PSES)

Chair: **Tom Lanzisero**
Vice Chair: **Vacant**
Email: safety@ieee.li



SIGNAL PROCESSING SOCIETY (SPS)

Chair: **Jessica Donaldson**
Vice Chair: **Dave Mesecher**
Email: signal@ieee.li



SOCIAL IMPLICATIONS OF TECHNOLOGY SOCIETY (SSIT)

Chair: **Howard Edelman**
Vice Chair: **John Vodopia**
Email: social@ieee.li

The Long Island Section of IEEE has 18 Chapters. Each Chapter is a technical subunit of the Long Island Section, associated with an IEEE Society. The Chapters, as well as the Section, are always welcoming volunteers. If you would like to help with any of the Long Island Chapter's steering groups, please do contact the relevant Chapter Chair, Vice Chair, or one of the Section officers.



SYSTEMS COUNCIL (SYSC)

Chair: **Stephanie White**
Vice Chair: **Vacant**
Email: systems@ieee.li



TECHNOLOGY & ENGINEERING MANAGEMENT SOCIETY (TEMS)

Chair: **Brian Quinn**
Vice Chair: **Barbara Porter**
Email: tmc@ieee.li

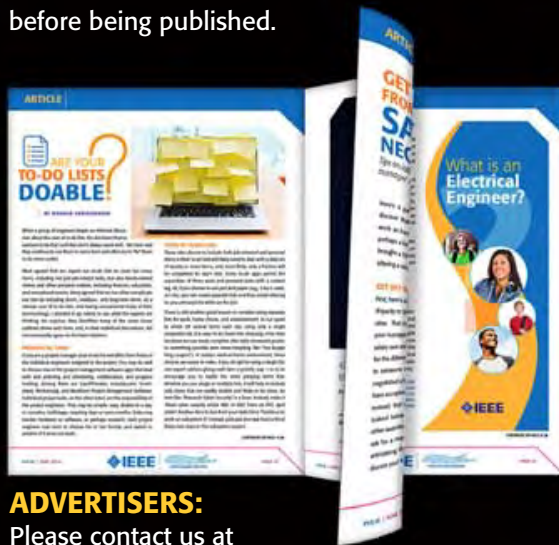
LET YOUR **VOICE**))) BE **HEARD**

WRITE TO **THE PULSE**

The Pulse of Long Island is a newsletter for the members of the IEEE Long Island Section. You can let your voice heard by writing to the Editor. How to bring more value to our members? Interesting new technology, or a project? An issue of interest to members of the IEEE Long Island, Long Island engineers and computer professionals, or Long Island technical community at large? Write to the **Pulse**. Let your letter be read, and your voice heard.

HOW CAN I CONTRIBUTE TO THE PULSE?

Send your letters or articles via email to pulse@ieee.li. If selected for publication, the letter or article will be edited before being published.



ADVERTISERS:

Please contact us at pulse@ieee.li for advertising rates.



CONTRIBUTION DEADLINE:

20th of a month for the next month edition.

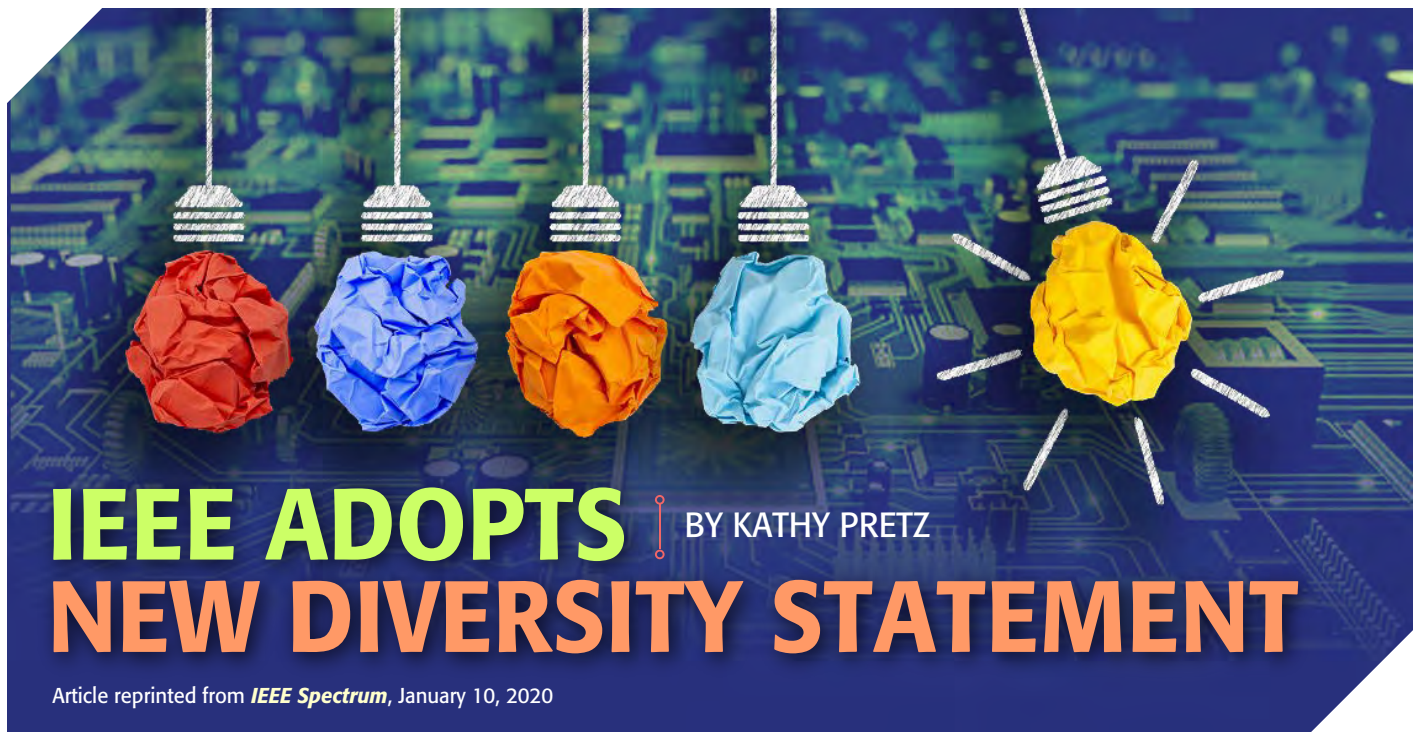
CONTRIBUTIONS FROM LONG ISLAND TECHNICAL & ENGINEERING COMPANIES:

Publish your technology-related press release (up to one page) at no cost. Please send the press release as a PDF file attached to email to pulse@ieee.li, addressed to the Editor, with a Subject line "Pulse -PR" followed by your company name, and the responsible contact person's name, email and phone number in the email body.



THE **PULSE**
OF LONG ISLAND

CONTRIBUTE TO THE PULSE – LET YOUR LETTER BE READ and LET YOUR YOUR VOICE BE HEARD



IEEE ADOPTS NEW DIVERSITY STATEMENT

BY KATHY PRETZ

Article reprinted from *IEEE Spectrum*, January 10, 2020

The organization is committed to fostering a culture that is **diverse, inclusive, and equitable**

At **IEEE**, diversity is an important and valued strength. IEEE is committed to maintaining an environment in which all are welcome to collaborate, to contribute to our community, to support the growth of our profession and our professional colleagues and to advance technology for the benefit of humanity.

To that end, in February 2019, the IEEE Board of Directors formed an ad hoc committee to review the organization's focus on diversity, inclusion, and professional ethics. The ad hoc committee's work included efforts aimed at the continued improvement of awareness and understanding of IEEE's commitment to diversity, inclusion and professional ethics, and efforts focused on improving the processes by which IEEE members hold each other accountable for our commitments.

One of the recommendations from this committee was a proposal to include a diversity statement as part of the IEEE policies. The

IEEE Board of Directors considered the proposal and during its November meeting approved the following statement for incorporation into the IEEE policies:

IEEE's mission to foster technological innovation and excellence to benefit humanity requires the talents and perspectives of people with different personal, cultural, and disciplinary backgrounds. IEEE is committed to advancing diversity in the technical profession, and to promoting an inclusive and equitable culture in its activities and programs that welcomes, engages and rewards those who contribute to the field without regard to race, religion, gender, disability, age, national origin, sexual orientation, gender identity, or gender expression.

This change to the IEEE policy reflects IEEE's longstanding commitment to ensure the engineering profession maximizes its impact and success by welcoming, engaging, and rewarding those who contribute to the field in an equitable manner.



CALL FOR LI STUDENT TECHNICAL INTERNS

Have your Internship summaries published in the *PULSE*



IEEE Long Island Section is currently accepting student **Technical Internship Summaries** to be published in the October and November *Pulse*.

SUBMISSION DUE DATE:

Tuesday, September 8, 2020

SUBJECT LINE:

IEEE Student Internship Summary

SUBMIT TO: education@ieee.li

FORMATS: .docx, .txt, .pdf

DETAILS:

<https://ieee.li/committees/education/>



LOOKING FOR AN UPDATE ON SECTION EVENTS?

FOR UPDATES ON ALL LONG ISLAND SECTION EVENTS, CHECK OUT THE IEEE LONG ISLAND SECTION WEBSITE:

www.ieee.li



IEEE computer society

SHARE YOUR EXPERIENCE PRESENT YOUR WORK TO THE IEEE

Working on an interesting project? Or have an interesting topic to talk about?
A startup ready to spread a word, or in need of beta testers with computer knowledge?

Computer Society Chapter invites you to present your project or your experience. For one of the upcoming meetings, we'd like to mash technical and social, and have several presenters presenting interesting computer-related topics in a shorter timeframe, fostering conversation. This is an opportunity to meet each other, learn about our work and possibly identify opportunities for collaboration.

Contact IEEE Computer Society Chapter at computer@ieee.li with your suggested topic.

IEEE MEMBERSHIP and MEMBER BENEFITS

IEEE membership offers access to technical innovation, cutting-edge information, networking opportunities, and exclusive member benefits. Members support IEEE's mission to advance technology for humanity and the profession, while memberships build a platform to introduce careers in technology to students around the world.



JOIN IEEE OR RENEW YOUR MEMBERSHIP

Reach your full potential as part of the world's largest technology community. Join professionals, experts, and advisors who can help shape your career, offer resources to acquire new skills, and advance your professional development.



MEMBER BENEFITS

As an IEEE member, you'll be presented with new resources, valuable opportunities, and many discounts that will help you advance your career in the right direction. You can find colleagues who share your vision and commitment—those who are moving technology forward today.



ENHANCE YOUR MEMBERSHIP—JOIN AN IEEE SOCIETY

IEEE Societies provide members with opportunities to connect with experts and network with colleagues locally and abroad—all while staying up-to-date on technology and trends in their industry.



GIFT OF MEMBERSHIP

IEEE membership delivers access to the industry's most essential technical information and provides networking opportunities both locally and globally. Members have the ability to stay current in their chosen profession, connect with peers, and invest in their future.



MEMBER-GET-A-MEMBER

Consider sharing your IEEE membership experience and get rewarded for doing so. Through the Member-Get-a-Member (MGM) program, IEEE rewards your efforts in recruiting new members. Your local IEEE Section can also benefit.



IEEE.tv

Made possible by IEEE members, IEEE.tv is an award-winning, Internet-based television network, producing special-interest programming about technology and engineering for IEEE members and the general public.

There is no better time to discover all that IEEE membership has to offer. Join now and your membership is through 2020.

WHEN YOU JOIN IEEE, YOU:

- Join a community of over 425,000 technology and engineering professionals united by a common desire to continuously learn, interact, collaborate, and innovate
- Get the resources and opportunities you need to keep on top of changes in technology
- Get involved in standards development
- Network with other professionals in your local area or within a specific technical interest
- Mentor the next generation of engineers and technologists and so much more.

IEEE members can access information on local events and activities by signing in to myIEEE, the members' personalized gateway to IEEE membership. In addition, members can also:

- Access individual Society memberships and subscriptions
 - Connect with local IEEE Sections and volunteer leadership
 - Find upcoming conferences
- Learn more about individual benefits
- Read the latest news from IEEE, IEEE Spectrum, IEEE Standards News, and The Institute

No need to over-engineer this.

Satisfaction will increase with exclusive IEEE member discounts and insurance.

Special, low pricing creates high value for IEEE Members.* Tap into exclusive member discounts on products and services from trusted brands.

*Where available

Price **Value**

Leverage your IEEE membership today!
Visit ieee.org/discounts and learn how this inverse relationship can be a proven formula.

You've Always Set Yourself Apart. Now it's Time to make it Official. Nominate Yourself to become a...

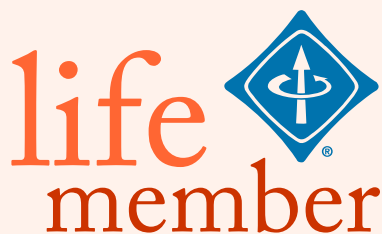
IEEE SENIOR MEMBER



Being elevated to senior member recognizes people who have moved beyond entry-level work in their careers. It also encourages them to engage more broadly with engineers and other technical professionals in companies and universities outside their own. To be eligible for senior member status, members must have worked in a professional capacity in a technical field for at least 10 years. Educational experience is partially credited toward that time. Nominees must also have professional references from three IEEE senior members, Fellows, or honorary members. If you're interested in elevation, you don't have to wait to be nominated—you can nominate yourself.

>> APPLY FOR *SENIOR MEMBER GRADE*

IEEE LIFE MEMBERS, *WRITE FOR THE PULSE!*



The Section is inviting you to record your stories and histories in our monthly publication, the *Long Island Pulse*. An article of approximately 300 – 350 words is recommended.

LET US HEAR FROM YOU.

Send your article to: pulse@ieee.li
Life Member Chair: life@ieee.li

The **IEEE Long Island Section** has held meetings with many of our Life Members and Senior Engineers, in recent months. Your stories and histories in engineering are interesting, inspiring and should be recorded for future generations. You have served your profession for many years, many have served our country in the military, many as engineers fighting the Cold War. The many contributions are the legacy to this new digital age, space age, environmental age and beyond.

WANTED: IEEE LIFE MEMBER NEEDED TO VOLUNTEER TO SUBMIT A MONTHLY HISTORY ARTICLE FOR THE *PULSE*

The **PULSE** is seeking a IEEE LI Life Member to write the *Long Island Electrical & Electronic History* monthly article for the **Pulse**. If interested contact pulse@ieee.li

WE WANT YOUR STORIES



IEEE CONSULTANTS NETWORK OF LONG ISLAND

THE IEEE CONSULTANTS NETWORK OF LONG ISLAND (LICN)

is a nonprofit professional organization affiliated with the Institute of Electrical and Electronics Engineers. Our members include dozens of electrical, electronic, mechanical and software engineers with expertise in over 65 categories of technology and business. All are members of the IEEE and adhere to the IEEE professional codes of ethics.

MEMBER
IEEE L.I. CONSULTANTS NETWORK



PETER BUITENKANT CONSULTANT

MICROPROCESSOR HARDWARE / SOFTWARE DESIGNS
DIGITAL CIRCUIT DESIGN • TRAINING COURSES

WEBSITE: www.peterbui-consult.com

24 Thorngrove Lane
Dix Hills, NY 11746

VOICE: (631) 491-3414
EMAIL: peterbui@optonline.net

(516) 378-0979

ambertec@ieee.org

Ambertec, P.E.P.C.

John Dunn – MSEE, PE

Member IEEE Consultants Network of Long Island

www.licn.org/Profile/JDunn

181 Marion Avenue

Merrick, NY 11566

Real Time Embedded - Financial Services - Transit
Architecture - Object Oriented Design - Java - C/C++
Full Stack - Internet of Things - Mobile Applications
Unix/Linux - Windows - Compilers - Communications



EARLY ELECTRONICS

Hardware / Software Consulting Services

Chris Early, BSEE, MSCS, PE
154 Hempstead Avenue
Rockville Centre, NY 11570

unixdev@ix.netcom.com
Voice: (516) 764-1067
Fax: (516) 764-1124

SIGNALS IN MOTION

Len Anderson
President



PHONE: 718-279-3953
FAX: 509-471-6496
E-MAIL: LenAnder@SignalsInMotion.com
WEBSITE: www.SignalsInMotion.com

BODNER & O'ROURKE, LLP
PATENTS, TRADEMARKS, COPYRIGHTS
AND RELATED MATTERS

GERALD T. BODNER PATENT ATTORNEY

425 BROADHOLLOW ROAD, SUITE 120
MELVILLE, NY 11747
TEL: (631) 249-7500
FAX: (631) 249-4508
gbodner@bodnerorourke.com

ADVANCE IN TECHNOLOGY, INC.

Electronic Design — Analog, Digital, RF and Systems

JOHN LIGUORI
CEO, MSEE
631-865-2423

82 Westwood Avenue, Deer Park, NY 11729

www.advance-in-technology.com

JLiguori@advance-in-technology.com

Broad Shoulder Consulting LLC

Electronics, Mechanics, Optics, Software
www.broshoco.com

Special Expertise in Medical Imaging
System Design, Prototyping and Production
Serving Start-ups and Technology Investors

Dmitriy Yavid
Founder
631-706-4696
dy@broshoco.com



Broad Shoulder Consulting, LLC
Long Island High Tech Incubator
25 Health Science Drive
Mail Box 320
Stony Brook, NY 11790-3350

Fred Katz Consulting, Inc.

93 Steven Place West Hauppauge, NY 11788

Proposals, Contracts & Specification Development
Innovative Creation, Electro-Mechanical
Analog & Digital Circuit/System Design
Wireless, Motion, Occupancy Sensors
System Analysis/Documentation
Commercial/Military Product Design
Sonar Systems and Acoustic Signal Processing
Security, Marine & Energy Saving, ROHS, UL Testing
Clever Inventions, Algorithm, IP & Patent Development



fred@fredkatzconsulting.com

www.fredkatzconsulting.com

Fred Katz
President

(631) 724-7702

Electronics
Consultant

Memberships: IEEE Senior Life Member, IEEE LI Consultants Network, LI Metal
Workers, Mensa Society, NYS Professional Inventors, Suffolk County Inventors

EXPERT WITNESS

TECHNICAL INVESTIGATOR

MARTIN KANNER AE, EE, MEE

PRODUCT LIABILITY
MACHINE INJURY

FIRE DAMAGE INJURY
LIGHTNING DAMAGE



sixxpoppy@juno.com

(516) 681-4346

POWER – CONTROLS DIV.
42 Glenwood Road
Plainview, NY 11803

EEDEngineering - Quality Software/Testing Solutions

Andrew Franklin Baxt
Managing Director of Engineering

Phone: 516-678-6563
Mobile: 561-558-3499
Oceanside, New York 11572
Andrew.Baxt@EEDEngineering.com
www.EEDEngineering.com

Carl Meshenberg

Technology Consulting Services

Electronic Product Development
Project Management
Marketing Strategies
Contract Development & Oversight

Mobile: 516 383-2595
carl.jmesh@gmail.com

PROGRAMMING PLUS®

2503 AVENUE X
BROOKLYN, NY 11235

HARDWARE & SOFTWARE CONSULTING

- ADMINISTRATION
- DEVELOPMENT
- ENGINEERING
- INTEGRATION
- DATABASES
- NETWORKS
- INTERNET
- SECURITY
- UNIX
- LINUX
- VMS
- WINDOWS

For expert assistance, contact **Robert Weiner, EE, PE**, at:

Tel: (718) 648-6902 Email: info@progplus.com
Fax: (718) 648-7449 Web: www.progplus.com

IEEE Consultants Network of Long Island

PO Box 411, Malverne NY 11565-0411

www.licn.org

(516) 379-1678

Affiliated with the Institute of Electrical
and Electronics Engineers, Inc.



Be sure to visit our web Blog at:
licn.typepad.com/my_weblog



John F. Vodopia, Esq.

Intellectual Property Law Firm

133C New York Avenue
Huntington, NY 11743

631-673-7555 ext: 5
631-327-6197 (Mobile)
631-425-7030 (Fax)

jvodopia@gmail.com
jvodopia@ieee.org





FARMINGDALE STATE COLLEGE SECURITY SYSTEMS AND LAW ENFORCEMENT TECHNOLOGY ASSISTANT PROFESSOR (2 Positions)

JOB DESCRIPTION:

The Department of Security Systems and Law Enforcement Technology at Farmingdale State College (SUNY) invites applications for two tenure-track positions at the rank of Assistant Professor beginning in the Fall of 2020. The successful candidate will teach a variety of undergraduate courses in Computer Security and Software Technology, including information security, cryptography, cyber security, computer forensics, database security, physical security, artificial intelligence, software development, and machine learning. Other responsibilities include student advisement and curriculum development. Candidates must engage in grant development work and research leading to publications in refereed academic journals. All faculty members at Farmingdale State College have three workload components: teaching, research and scholarly activity, and service. The successful candidate will demonstrate an interest and high level of competence in teaching. Candidates should have a research agenda that complements their area of academic specialty resulting in peer-reviewed publications and presentation, both of which are necessary for promotion and tenure at Farmingdale State College. The service component of the workload includes student advisement as well as active participation on departmental, school and college-wide committees. The faculty member may be expected to teach in multiple formats including hybrid, online and traditional face-to-face classes. The college particularly welcomes candidates with knowledge, skills and abilities that include: Commitment to diversity and university initiatives supportive of diversity and inclusion. Interest in participating in student-centered service activities. Desire to apply expertise in promoting civic engagement with the College's many community partners.

REQUIRED QUALIFICATIONS:

An earned doctorate in Computer Science, Computer Security, Cybersecurity, Computer Engineering, or a closely related field. Highly qualified ABD's may be considered if completion of the Ph.D. will occur by the Spring 2021 semester. A proven track of records programming with C, C++, Java, Python, and/or other programming languages beyond school level, and familiarity with Windows, Linux and Mac OS. The candidate must be a permanent resident or a US citizen because Farmingdale State College does not offer any kind of visa sponsorship.

PREFERRED QUALIFICATIONS:

The candidate should have earned a Bachelor's degree in Computer Security, Computer Science, Computer Engineering, or a closely related field. He/she should possess expertise or interest in the areas of Computer security, cyber security, homeland security, physical security, artificial intelligence and/or machine learning. Applicant should possess excellent communication, interpersonal skills and have previous college level teaching experience. Evidence of prior teaching experience, scholarly publications and any industry experience is preferred.

ADDITIONAL INFORMATION:

This is a full-time, 10 month faculty position. For the first 10 working days, beginning Friday, October 25, 2019 and ending Thursday November 7, 2019, applications will be limited to UUP Farmingdale. CLOSING DATE FOR RECEIPT OF APPLICATIONS: Sunday, December 8, 2019. Salary: \$70,000/year, may increase commensurate with experience. ANTICIPATED START DATE: Tuesday, September 1, 2020. SUNY offers excellent fringe benefits including health insurance options and retirement plans. VISA SPONSORSHIP IS NOT AVAILABLE FOR THIS POSITION.

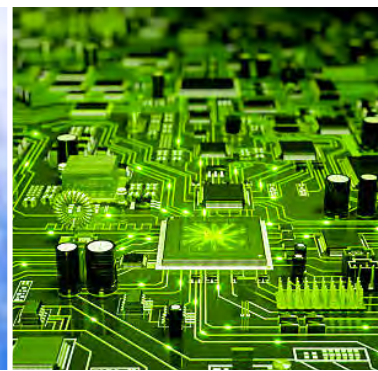
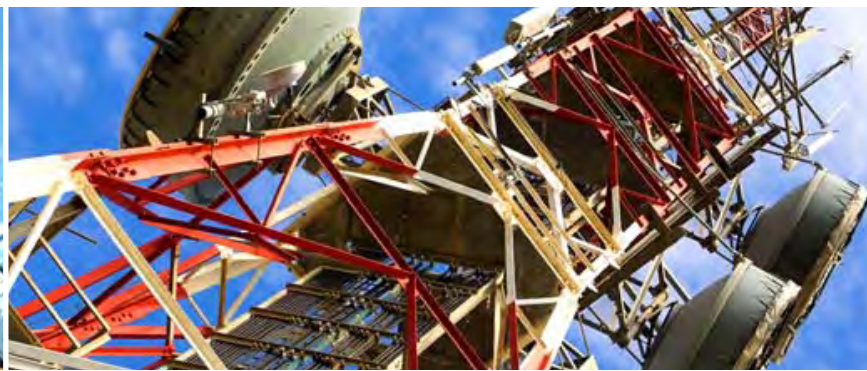
APPLICATION INSTRUCTIONS:

To apply, submit a letter of application (that includes a statement on teaching philosophy and methodology), c.v., copies of teaching evaluations, unofficial copy of graduate transcripts (showing highest degree awarded/or currently in process), names and contact information of three references. Only applications made through Farmingdale's electronic application system will be accepted. Candidates invited for interviews will be asked to make a presentation on their research/creative activities as well as a separate teaching demonstration.

TO APPLY GO TO:

www.farmingdale.edu/employment

Farmingdale State College
STATE UNIVERSITY OF NEW YORK



THE PULSE

OF LONG ISLAND